

35-1044: Polyclonal Antibody to STAT3 (Phospho-Tyr705)

Clonality :	Polyclonal
Application :	WB,IHC,IF
Reactivity :	Human,Mouse,Rat
Gene :	STAT3
Gene ID :	6774
Uniprot ID :	P40763
Format :	Purified
Alternative Name :	APRF, Acute-phase response factor, HIES
Isotype :	Rabbit IgG
Immunogen Information :	Peptide sequence around phosphorylation site of tyrosine 705 (A-P-Y(p)-L-K) derived from Human STAT3.

Description

Transcription factor that binds to the interleukin-6 (IL-6)-responsive elements identified in the promoters of various acute-phase protein genes. Activated by IL31 through IL31RA. Fan G, et al. (2003) J Biol Chem. 278(52): 52432-52436. Barry FA, et al. (2003) FEBS Lett. 553(1-2): 173-178. Welsh, et al. (1996) Trends Cell Biol. 6: 274-279. Srivastava A K, et al. (1998) Mol Cell Biochem. 182: 135-141.

Product Info

Amount :	50 µl / 100 µl
Content :	Supplied at 1.0mg/mL in phosphate buffered saline (without Mg ²⁺ and Ca ²⁺), pH 7.4, 150mM NaCl, 0.02% sodium azide and 50% glycerol.
Storage condition :	Store the antibody at 4°C, stable for 6 months. For long-term storage, store at -20°C. Avoid repeated freeze and thaw cycles.

Application Note

Predicted MW: 88kd, Western blotting: 1:500~1:1000, Immunohistochemistry: 1:50~1:100

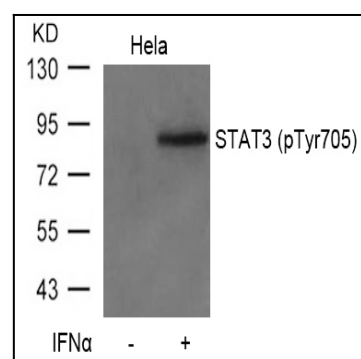


Figure 1: Western blot analysis of extracts from HeLa cells untreated or treated with IFN α using STAT3(Phospho-Tyr705) Antibody 35-1044 .

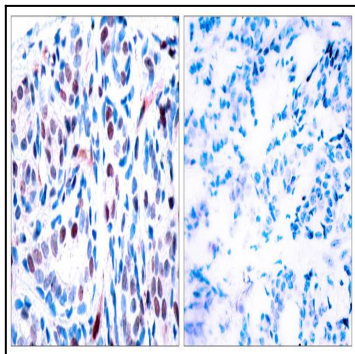


Figure 2: Immunohistochemical analysis of paraffin-embedded human breast carcinoma tissue using STAT3 (Phospho-Tyr705) Antibody 35-1044 (left) or the same antibody preincubated with blocking peptide 51045 (right).

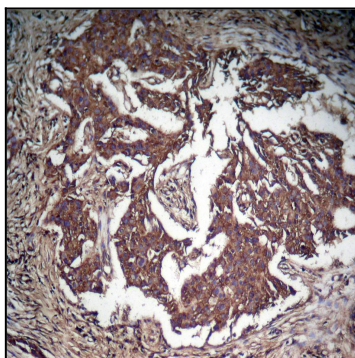


Figure 3: Immunohistochemical analysis of paraffin-embedded human Lung carcinoma tissue using STAT3 (Phospho-Tyr705) Antibody 35-1044 .

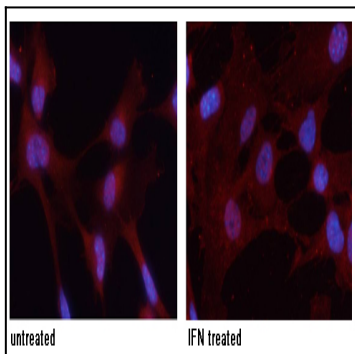


Figure 4: Immunofluorescence staining of methanol-fixed MEF cells untreated or treated with IFN using STAT3 (Phospho-Tyr705) Antibody 35-1044 .