

35-1076: Polyclonal Antibody to PKD/PKC (Phospho-Ser738)

Clonality :	Polyclonal
Application :	WB,IF
Reactivity :	Human,Mouse,Rat
Gene :	PRKD1
Gene ID :	5587
Uniprot ID :	Q15139
Format :	Purified
Alternative Name :	KPCD1, PKC-mu, PKCM, PKD, PRKCM
Isotype :	Rabbit IgG
Immunogen Information :	Peptide sequence around phosphorylation site of serine 738 (E-K-S(p)-F-R) derived from Human PKD/PKCm.

Description

Converts transient diacylglycerol. (DAG) signals into prolonged physiological effects, downstream of PKC. Involved in resistance to oxidative stress through activation of NF-kappa-B.

Product Info

Amount :	50 µl / 100 µl
Content :	Supplied at 1.0mg/mL in phosphate buffered saline (without Mg ²⁺ and Ca ²⁺), pH 7.4, 150mM NaCl, 0.02% sodium azide and 50% glycerol.
Storage condition :	Store the antibody at 4°C, stable for 6 months. For long-term storage, store at -20°C. Avoid repeated freeze and thaw cycles.

Application Note

Predicted MW: 115kd, Western blotting: 1:500~1:1000, Immunofluorescence: 1:100~1:200

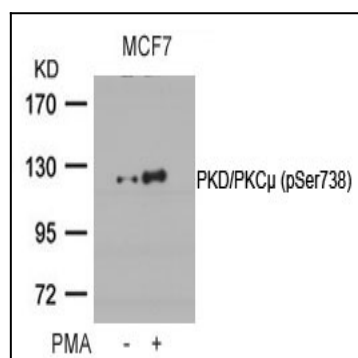


Figure 1: Western blot analysis of extracts from MCF cells untreated or treated with PMA using PKD/PKCm(Phospho-Ser738) Antibody 35-1076 .

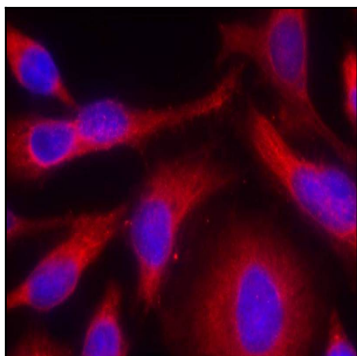


Figure 2: Immunofluorescence staining of methanol-fixed HeLa cells using PKD/PKCm(Phospho-Ser738) Antibody 35-1076 .