

35-1122: Polyclonal Antibody to LIMK1 (Phospho-Thr508)

Clonality :	Polyclonal
Application :	WB,IHC,IF
Reactivity :	Human,Mouse,Rat
Gene :	LIMK1
Gene ID :	3984
Uniprot ID :	P53667
Format :	Purified
Alternative Name :	LIMK-1, kinase LIMK1
Isotype :	Rabbit IgG
Immunogen Information :	Peptide sequence around phosphorylation site of threonine 508 (R-Y-T(p)-V-V) derived from Human LIMK1.

Description

Protein kinase which regulates actin filament dynamics. Phosphorylates and inactivates the actin binding/depolymerizing factor cofilin, thereby stabilizing the actin cytoskeleton. Isoform 3 has a dominant negative effect on actin cytoskeletal changes. May be involved in brain development.

Product Info

Amount :	50 µl / 100 µl
Content :	Supplied at 1.0mg/mL in phosphate buffered saline (without Mg ²⁺ and Ca ²⁺), pH 7.4, 150mM NaCl, 0.02% sodium azide and 50% glycerol.
Storage condition :	Store the antibody at 4°C, stable for 6 months. For long-term storage, store at -20°C. Avoid repeated freeze and thaw cycles.

Application Note

Predicted MW: 72kd, Western blotting: 1:500~1:1000, Immunohistochemistry: 1:50~1:100, Immunofluorescence: 1:100~1:200

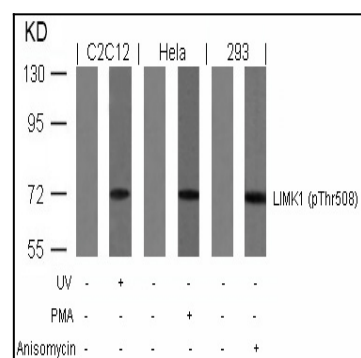


Figure 1: Western blot analysis of extracts from UV-treated C2C12, PMA-treated HeLa and anisomycin-treated 293 cells using LIMK1(Phospho-Thr508) Antibody 35-1122 .

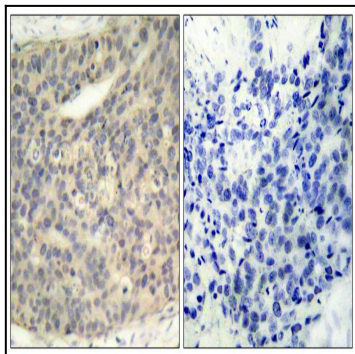


Figure 2: Immunohistochemical analysis of paraffin-embedded human breast carcinoma tissue using LIMK1(Phospho-Thr508) Antibody 35-1122 (left) or the same antibody preincubated with blocking peptide(right).

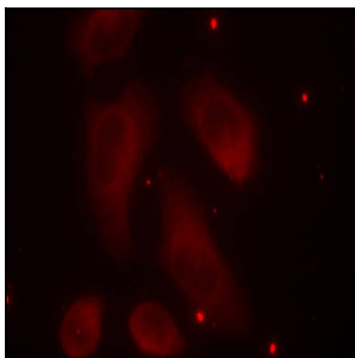


Figure 3: Immunofluorescence staining of methanol-fixed HeLa cells using LIMK1(Phospho-Thr508) Antibody 35-1122 .