

### 35-1129: Polyclonal Antibody to CDK2 (Phospho-Thr160)

<b>Clonality :</b>	Polyclonal
<b>Application :</b>	WB,IHC
<b>Reactivity :</b>	Human,Mouse,Rat
<b>Gene :</b>	CDK2
<b>Gene ID :</b>	1017
<b>Uniprot ID :</b>	P24941
<b>Format :</b>	Purified
<b>Alternative Name :</b>	kinase Cdk2, p33 protein kinase
<b>Isotype :</b>	Rabbit IgG
<b>Immunogen Information :</b>	Peptide sequence around phosphorylation site of threonine 160 (T-Y-T(p)-H-E) derived from Human CDK2.

#### Description

Involved in the control of the cell cycle. Interacts with cyclins A, B1, B3, D, or E. Activity of CDK2 is maximal during S phase and G2.

#### Product Info

<b>Amount :</b>	50 µl / 100 µl
<b>Content :</b>	Supplied at 1.0mg/mL in phosphate buffered saline (without Mg <sup>2+</sup> and Ca <sup>2+</sup> ), pH 7.4, 150mM NaCl, 0.02% sodium azide and 50% glycerol.
<b>Storage condition :</b>	Store the antibody at 4°C, stable for 6 months. For long-term storage, store at -20°C. Avoid repeated freeze and thaw cycles.

#### Application Note

Predicted MW: 34kd, Western blotting: 1:500~1:1000, Immunohistochemistry: 1:50~1:100

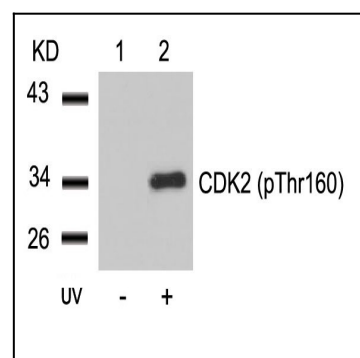


Figure 1: Western blot analysis of extracts from HeLa cells untreated(lane 1) or treated with UV(lane 2) using CDK2(Phospho-Thr160) Antibody 35-1129 .

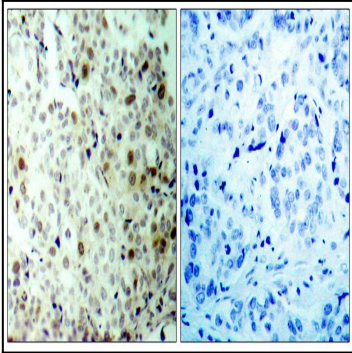


Figure 2: Immunohistochemical analysis of paraffin-embedded human breast carcinoma tissue using CDK2(Phospho-Thr160) Antibody 35-1129 (left) or the same antibody preincubated with blocking peptide(right).