

35-1134: Polyclonal Antibody to cofilin (Phospho-Ser3)

Clonality :	Polyclonal
Application :	WB,IHC,IF
Reactivity :	Human,Mouse,Rat
Gene :	CFL1
Gene ID :	1072
Uniprot ID :	P23528
Format :	Purified
Alternative Name :	CFL, CFL1
Isotype :	Rabbit IgG
Immunogen Information :	Peptide sequence around phosphorylation site of serine 3 (M-A-S(p)-G-V) derived from Human cofilin.

Description

Controls reversibly actin polymerization and depolymerization in a pH-sensitive manner. It has the ability to bind G- and F-actin in a 1:1 ratio of cofilin to actin. It is the major component of intranuclear and cytoplasmic actin rods.

Product Info

Amount :	50 µl / 100 µl
Content :	Supplied at 1.0mg/mL in phosphate buffered saline (without Mg ²⁺ and Ca ²⁺), pH 7.4, 150mM NaCl, 0.02% sodium azide and 50% glycerol.
Storage condition :	Store the antibody at 4°C, stable for 6 months. For long-term storage, store at -20°C. Avoid repeated freeze and thaw cycles.

Application Note

Predicted MW: 19kd, Western blotting: 1:500~1:1000, Immunohistochemistry: 1:50~1:100, Immunofluorescence: 1:100~1:200

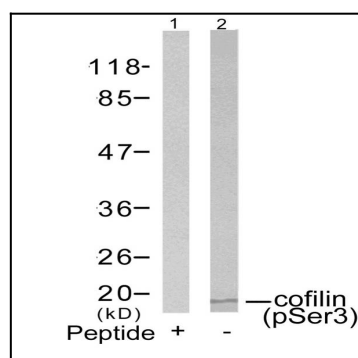


Figure 1: Western blot analysis of extracts from COLO205 cells using cofilin(Phospho-Ser3) Antibody 35-1134 (Lane 2) and the same antibody preincubated with blocking peptide(Lane1).

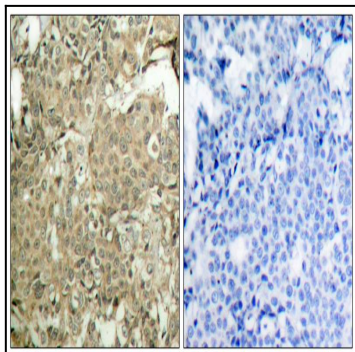


Figure 2: Immunohistochemical analysis of paraffin-embedded human breast carcinoma tissue using cofilin(Phospho-Ser3) Antibody 35-1134 (left) or the same antibody preincubated with blocking peptide(right).

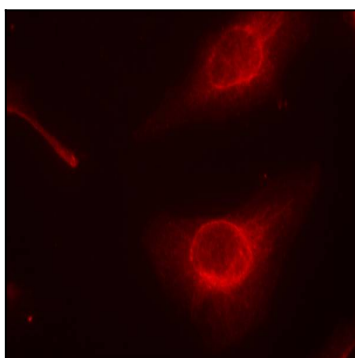


Figure 3: Immunofluorescence staining of methanol-fixed Hela cells using cofilin(Phospho-Ser3) Antibody 35-1134 .