

## 35-1147: Polyclonal Antibody to Src (Phospho-Tyr529)

<b>Clonality :</b>	Polyclonal
<b>Application :</b>	WB,IHC,IF
<b>Reactivity :</b>	Human,Mouse,Rat
<b>Gene :</b>	SRC
<b>Gene ID :</b>	6714
<b>Uniprot ID :</b>	P12931
<b>Format :</b>	Purified
<b>Alternative Name :</b>	C-SRC, SRC1
<b>Isotype :</b>	Rabbit IgG
<b>Immunogen Information :</b>	Peptide sequence around phosphorylation site of tyrosine 529 (P-Q-Y(p)-Q-P) derived from Human Src.

### Description

proto-oncogenic cytoplasmic tyrosine kinase of the SRC family. Highly expressed in certain fully differentiated cells such as neurons, platelets and macrophages. Phosphorylation of an activation loop tyrosine activates the enzyme; phosphorylation of a tyrosine in the C-terminus by Csk inhibits the enzyme. Pyper J.M., (1985) Mol. Cell. Biol. 5:831-838 Pyper J.M.(1990) Mol. Cell. Biol. 10:2035-2040 Xu W., (1997).Nature 385:595-602 Benes C.H., (2005) Cell 121:271-280

### Product Info

<b>Amount :</b>	50 µl / 100 µl
<b>Content :</b>	Supplied at 1.0mg/mL in phosphate buffered saline (without Mg <sup>2+</sup> and Ca <sup>2+</sup> ), pH 7.4, 150mM NaCl, 0.02% sodium azide and 50% glycerol.
<b>Storage condition :</b>	Store the antibody at 4°C, stable for 6 months. For long-term storage, store at -20°C. Avoid repeated freeze and thaw cycles.

### Application Note

Predicted MW: 60kd, Western blotting: 1:500~1:1000, Immunohistochemistry: 1:50~1:100, Immunofluorescence: 1:100~1:200

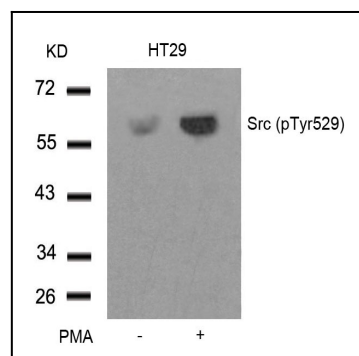


Figure 1: Western blot analysis of extracts from HT29 cells untreated or treated with PMA using Src(Phospho-Tyr529) Antibody 35-1147 .

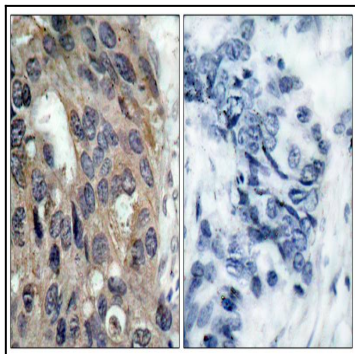


Figure 2: Immunohistochemical analysis of paraffin-embedded human breast carcinoma tissue using Src(Phospho-Tyr529) Antibody 35-1147 (left) or the same antibody preincubated with blocking peptide(right).

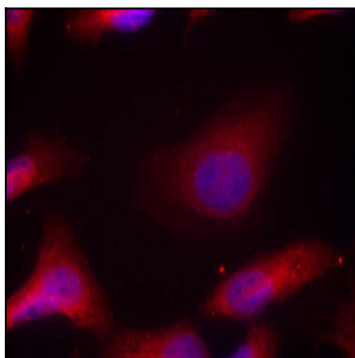


Figure 3: Immunofluorescence staining of methanol-fixed HeLa cells using Src(Phospho-Tyr529) Antibody 35-1147 .

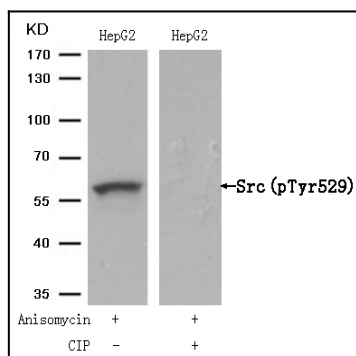


Figure 4: Western blot analysis of extracts from HepG2 cells, treated with Anisomycin or calf intestinal phosphatase (CIP), using Src (Phospho-Tyr529) Antibody 35-1147 .