

### 35-1217: Polyclonal Antibody to S6 Ribosomal Protein (Phospho-Ser235)

<b>Clonality :</b>	Polyclonal
<b>Application :</b>	WB,IF
<b>Reactivity :</b>	Human,Mouse,Rat
<b>Gene :</b>	RPS6
<b>Gene ID :</b>	6194
<b>Uniprot ID :</b>	P62753
<b>Format :</b>	Purified
<b>Alternative Name :</b>	NP33, RPS6, RS6
<b>Isotype :</b>	Rabbit IgG
<b>Immunogen Information :</b>	Peptide sequence around phosphorylation site of serine 235 (R-L-S(p)-S-L) derived from Human S6 Ribosomal Protein.

#### Description

May play an important role in controlling cell growth and proliferation through the selective translation of particular classes of mRNA.

#### Product Info

<b>Amount :</b>	50 µl / 100 µl
<b>Content :</b>	Supplied at 1.0mg/mL in phosphate buffered saline (without Mg <sup>2+</sup> and Ca <sup>2+</sup> ), pH 7.4, 150mM NaCl, 0.02% sodium azide and 50% glycerol.
<b>Storage condition :</b>	Store the antibody at 4°C, stable for 6 months. For long-term storage, store at -20°C. Avoid repeated freeze and thaw cycles.

#### Application Note

Predicted MW: 32kd, Western blotting: 1:500~1:1000, Immunofluorescence: 1:100~1:200

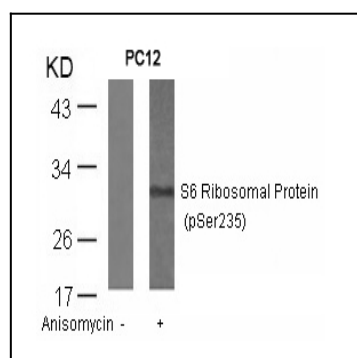


Figure 1: Western blot analysis of extracts from PC12 cells untreated or treated with anisomycin using S6 Ribosomal Protein(Phospho-Ser235) Antibody 35-1217 .

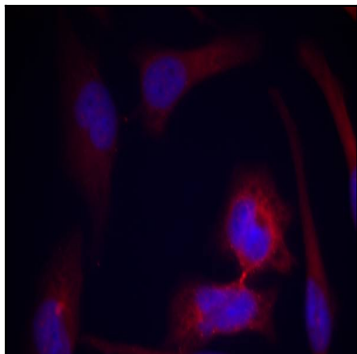


Figure 2: Immunofluorescence staining of methanol-fixed HeLa cells using S6 Ribosomal Protein(Phospho-Ser235) Antibody 35-1217 .