

### 35-1236: Polyclonal Antibody to RelB (Phospho-Ser573)

<b>Clonality :</b>	Polyclonal
<b>Application :</b>	WB,IHC
<b>Reactivity :</b>	Human,Mouse,Rat
<b>Gene :</b>	RELB
<b>Gene ID :</b>	5971
<b>Uniprot ID :</b>	Q01201
<b>Format :</b>	Purified
<b>Alternative Name :</b>	I-Rel
<b>Isotype :</b>	Rabbit IgG
<b>Immunogen Information :</b>	Peptide sequence around phosphorylation site of serine 573 (L-L-S(p)-P-G) derived from Human RelB.

#### Description

NF-kappa-B is a pleiotropic transcription factor which is present in almost all cell types and is involved in many biological processes such as inflammation, immunity, differentiation, cell growth, tumorigenesis and apoptosis. NF-kappa-B is a homo- or heterodimeric complex formed by the Rel-like domain-containing proteins RELA/p65, RELB, NFkB1/p105, NFkB1/p50, REL and NFkB2/p52. The dimers bind at kappa-B sites in the DNA of their target genes and the individual dimers have distinct preferences for different kappa-B sites that they can bind with distinguishable affinity and specificity. Different dimer combinations act as transcriptional activators or repressors, respectively. NF-kappa-B is controlled by various mechanisms of post-translational modification and subcellular compartmentalization as well as by interactions with other cofactors or corepressors. NF-kappa-B complexes are held in the cytoplasm in an inactive state complexed with members of the NF-kappa-B inhibitor (I-kappa-B) family. In a conventional activation pathway, I-kappa-B is phosphorylated by I-kappa-B kinases (IKKs) in response to different activators, subsequently degraded thus liberating the active NF-kappa-B complex which translocates to the nucleus. NF-kappa-B heterodimeric RelB-p50 and RelB-p52 complexes are transcriptional activators. RELB neither associates with DNA nor with RELA/p65 or REL. Stimulates promoter activity in the presence of NFkB2/p49.

#### Product Info

<b>Amount :</b>	50 µl / 100 µl
<b>Content :</b>	Supplied at 1.0mg/mL in phosphate buffered saline (without Mg <sup>2+</sup> and Ca <sup>2+</sup> ), pH 7.4, 150mM NaCl, 0.02% sodium azide and 50% glycerol.
<b>Storage condition :</b>	Store the antibody at 4°C, stable for 6 months. For long-term storage, store at -20°C. Avoid repeated freeze and thaw cycles.

#### Application Note

Predicted MW: 70kd, Western blotting: 1:500~1:1000, Immunohistochemistry: 1:50~1:100

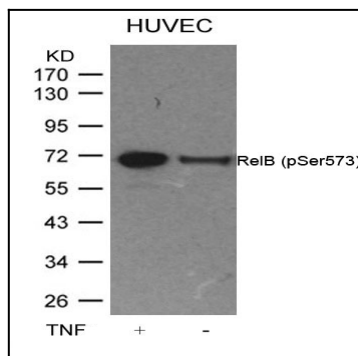


Figure 1: Western blot analysis of extracts from HUVEC cells untreated or treated with TNF using RelB(Phospho-Ser573) Antibody 35-1236 .

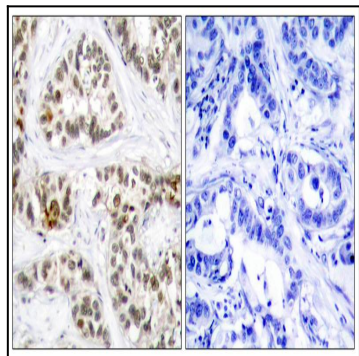


Figure 2: Immunohistochemical analysis of paraffin-embedded human breast carcinoma tissue using RelB(Phospho-Ser573) Antibody 35-1236 (left) or the same antibody preincubated with blocking peptide(right).