

35-1260: Polyclonal Antibody to Alpha-Synuclein (Phospho-Tyr133)

Clonality :	Polyclonal
Application :	WB,IF
Reactivity :	Human,Mouse,Rat
Gene :	SNCA
Gene ID :	6622
Uniprot ID :	P37840
Format :	Purified
Alternative Name :	NACP, SYN, SYUA, alpha-synuclein
Isotype :	Rabbit IgG
Immunogen Information :	Peptide sequence around phosphorylation site of tyrosine 133 (E-G-Y(p)-Q-D) derived from Human α -Synuclein.

Description

SncA is a member of the synuclein family of structurally related proteins that are prominently expressed in the central nervous system, which also includes beta- and gamma-synuclein. Synucleins are abundantly expressed in the brain and SncA and Snc-Beta inhibit phospholipase D2 selectively. SncA may serve to integrate presynaptic signaling and membrane trafficking. Aggregated SncA proteins form brain lesions that are hallmarks of neurodegenerative synucleinopathies. Defects in SncA play a role in the pathogenesis of Parkinson disease. SncA peptides are a major component of amyloid plaques in the brains of patients with Alzheimer disease. SncA shares 95% sequence homology with rat SncA. Rat SncA is specifically expressed in brain and is associated with synaptosomal membranes in neurons

Product Info

Amount :	50 μ l / 100 μ l
Content :	Supplied at 1.0mg/mL in phosphate buffered saline (without Mg ²⁺ and Ca ²⁺), pH 7.4, 150mM NaCl, 0.02% sodium azide and 50% glycerol.
Storage condition :	Store the antibody at 4°C, stable for 6 months. For long-term storage, store at -20°C. Avoid repeated freeze and thaw cycles.

Application Note

Predicted MW: 18kd, Western blotting: 1:500~1:1000, Immunofluorescence: 1:100~1:200

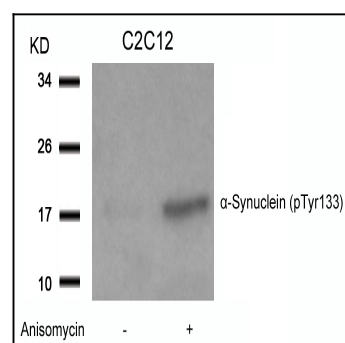


Figure 1: Western blot analysis of extracts from C2C12 cells untreated or treated with Anisomycin using α -Synuclein(Phospho-Tyr133) Antibody 35-1260 .

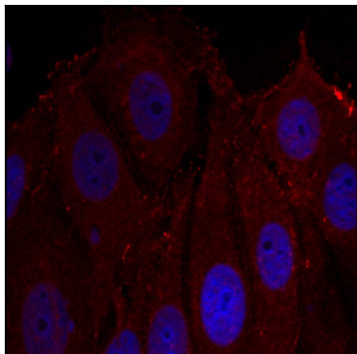


Figure 2: Immunofluorescence staining of methanol-fixed HeLa cells using a-Synuclein(Phospho-Tyr133) Antibody 35-1260 .