

35-1277: Polyclonal Antibody to Keratin 8 (Phospho-Ser74)

Clonality :	Polyclonal
Application :	WB,IF
Reactivity :	Human
Gene :	KRT8
Gene ID :	3856
Uniprot ID :	P05787
Format :	Purified
Alternative Name :	CK 8, CK8, CYK8, Cytokeratin endo A, K8
Isotype :	Rabbit IgG
Immunogen Information :	Peptide sequence around phosphorylation site of serine 74 (L-L-S(p)-P-L) derived from Human Keratin 8 (CK8).

Description

Keratin 8 is a member of the type II keratin family clustered on the long arm of chromosome 12. Type I and type II keratins heteropolymerize to form intermediate-sized filaments in the cytoplasm of epithelial cells. The product of this gene typically dimerizes with keratin 18 to form an intermediate filament in simple single-layered epithelial cells. This protein plays a role in maintaining cellular structural integrity and also functions in signal transduction and cellular differentiation. Mutations in this gene cause cryptogenic cirrhosis. Nakamichi I, et al. (2002) Mol Biol Cell; 13(10): 3441-3451. Prochasson P, et al. (2002) Nucleic Acids Res; 30(15): 3312-3322. Pankov R, et al. (1994) Proc Natl Acad Sci U S A; 91(3): 873-877. Thorey IS, et al. (1993) Mol Cell Biol; 13(11): 6742-6751

Product Info

Amount :	50 µl / 100 µl
Content :	Supplied at 1.0mg/mL in phosphate buffered saline (without Mg ²⁺ and Ca ²⁺), pH 7.4, 150mM NaCl, 0.02% sodium azide and 50% glycerol.
Storage condition :	Store the antibody at 4°C, stable for 6 months. For long-term storage, store at -20°C. Avoid repeated freeze and thaw cycles.

Application Note

Predicted MW: 55kd, Western blotting: 1:500~1:1000, Immunofluorescence: 1:100~1:200

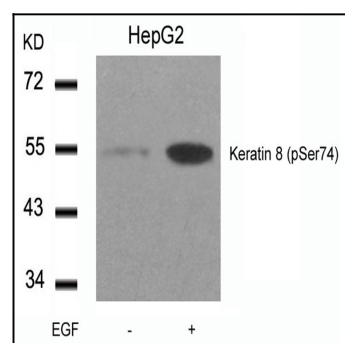


Figure 1: Western blot analysis of extracts from HepG2 cells untreated or treated with EGF using Keratin 8(Phospho-Ser74) Antibody 35-1277 .

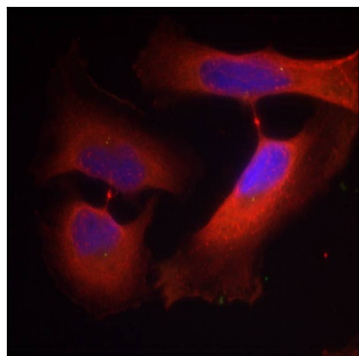


Figure 2: Immunofluorescence staining of methanol-fixed HeLa cells using Keratin 8(Phospho-Ser74) Antibody 35-1277 .

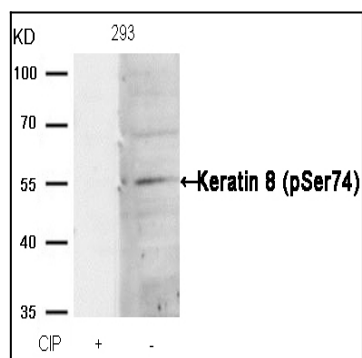


Figure 3: Western blot analysis of extracts from 293 cells, treated with calf intestinal phosphatase (CIP), using Keratin 8 (Phospho-Ser74) Antibody 35-1277 .