

### 35-1305: Polyclonal Antibody to cofilin1/cofilin2 (phospho-Tyr88)

<b>Clonality :</b>	Polyclonal
<b>Application :</b>	IHC, WB
<b>Reactivity :</b>	Human, Mouse, Rat
<b>Gene :</b>	CFL1
<b>Gene ID :</b>	1072
<b>Uniprot ID :</b>	P23528/ Q9Y281
<b>Format :</b>	Purified
<b>Alternative Name :</b>	CFL1/CFL2
<b>Isotype :</b>	Rabbit IgG
<b>Immunogen Information :</b>	Peptide sequence around phosphorylation site of tyrosine 88 (A-T-Y(p)-E-T) derived from Human cofilin1/cofilin2.

#### Description

Controls reversibly actin polymerization and depolymerization in a pH-sensitive manner. It has the ability to bind G- and F-actin in a 1:1 ratio of cofilin to actin. It is the major component of intranuclear and cytoplasmic actin rods.

#### Product Info

<b>Amount :</b>	50 µl / 100 µl
<b>Content :</b>	Supplied at 1.0mg/mL in phosphate buffered saline (without Mg <sup>2+</sup> and Ca <sup>2+</sup> ), pH 7.4, 150mM NaCl, 0.02% sodium azide and 50% glycerol.
<b>Storage condition :</b>	Store the antibody at 4°C, stable for 6 months. For long-term storage, store at -20°C. Avoid repeated freeze and thaw cycles.

#### Application Note

Predicted MW: 19kd, Western blotting: 1:500~1:1000, Immunohistochemistry: 1:50~1:100

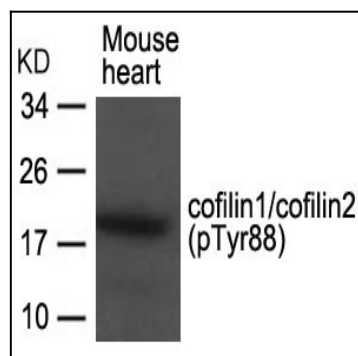


Figure 1: Western blot analysis of extracts from Mouse heart tissue using cofilin1/cofilin2(phospho-Tyr88) Antibody 35-1305 .

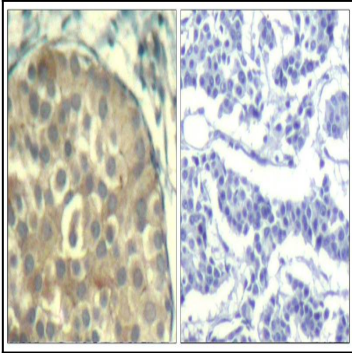


Figure 2: Immunohistochemical analysis of paraffin-embedded human breast carcinoma tissue using cofilin1/cofilin2(Phospho-Tyr88) Antibody 35-1305 (left) or the same antibody preincubated with blocking peptide(right).