

35-1362: Polyclonal Antibody to Elk-1 (Ab-383)

| | |
|--------------------------------|---|
| Clonality : | Polyclonal |
| Application : | IHC |
| Reactivity : | Human,Mouse,Rat |
| Gene : | ELK1 |
| Gene ID : | 2002 |
| Uniprot ID : | P19419 |
| Format : | Purified |
| Alternative Name : | ELK1, ETS-domain protein Elk-1 |
| Isotype : | Rabbit IgG |
| Immunogen Information : | Peptide sequence around aa.381~385 (T-L-S-P-I) derived from Human Elk1. |

Description

Elk-1 is a member of the Ets family of transcription factors and of the ternary complex factor (TCF) subfamily. Proteins of the TCF subfamily form a ternary complex by binding to the the serum response factor and the serum reponse element in the promoter of the c-fos proto-oncogene. The protein encoded by this gene is a nuclear target for the ras-raf-MAPK signaling cascade. Alternatively spliced transcript variants encoding the same protein have been found for this gene

Product Info

| | |
|----------------------------|--|
| Amount : | 50 µl / 100 µl |
| Content : | Supplied at 1.0mg/mL in phosphate buffered saline (without Mg ²⁺ and Ca ²⁺), pH 7.4, 150mM NaCl, 0.02% sodium azide and 50% glycerol. |
| Storage condition : | Store the antibody at 4°C, stable for 6 months. For long-term storage, store at -20°C. Avoid repeated freeze and thaw cycles. |

Application Note

Predicted MW: 47kd, Immunohistochemistry: 1:50~1:100

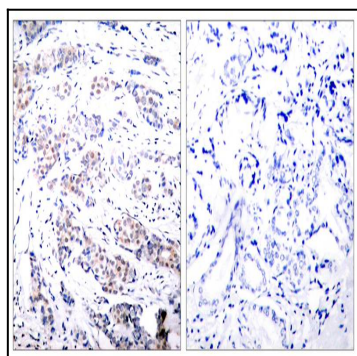


Figure 1: Immunohistochemical analysis of paraffin-embedded human breast carcinoma tissue using Elk-1 (Ab-383) Antibody 35-1362 (left) or the same antibody preincubated with blocking peptide(right).