

35-1415: Polyclonal Antibody to BCL-XL (Ab-62)

Clonality :	Polyclonal
Application :	WB
Reactivity :	Human,Mouse,Rat
Gene :	BAD
Gene ID :	572
Uniprot ID :	Q92934
Format :	Purified
Alternative Name :	BAD, BBC6, BCL2L8
Isotype :	Rabbit IgG
Immunogen Information :	Peptide sequence around aa.60~64 (A-D-S-P-A) derived from human BCL-XL .

Description

Potent inhibitor of cell death. Isoform Bcl-X(L) anti-apoptotic activity is inhibited by association with SIVA isoform 1. Inhibits activation of caspases By similarity. Appears to regulate cell death by blocking the voltage-dependent anion channel (VDAC) by binding to it and preventing the release of the caspase activator, cytochrome c, from the mitochondrial membrane. The Bcl-X(S) isoform promotes apoptosis.

Product Info

Amount :	50 µl / 100 µl
Content :	Supplied at 1.0mg/mL in phosphate buffered saline (without Mg ²⁺ and Ca ²⁺), pH 7.4, 150mM NaCl, 0.02% sodium azide and 50% glycerol.
Storage condition :	Store the antibody at 4°C, stable for 6 months. For long-term storage, store at -20°C. Avoid repeated freeze and thaw cycles.

Application Note

Predicted MW: 30kd, Western blotting: 1:500~1:1000

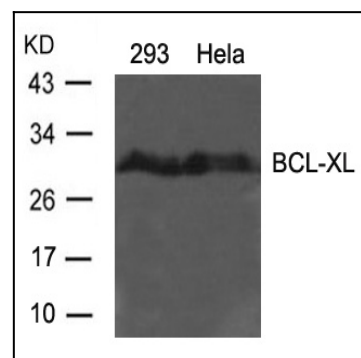


Figure 1: Western blot analysis of extracts from 293 and HeLa cells using BCL-XL(Ab-62) Antibody 35-1415 .