

35-1418: Polyclonal Antibody to BAD (Ab-155)

Clonality :	Polyclonal
Application :	WB,IHC
Reactivity :	Human
Gene :	Bad
Gene ID :	12015
Uniprot ID :	Q61337
Format :	Purified
Alternative Name :	Bbc2
Isotype :	Rabbit IgG
Immunogen Information :	Peptide sequence around aa.153~157 (R-M-S-D-E) derived from Mouse BAD.

Description

The protein encoded by BAD gene is a member of the BCL-2 family. BCL-2 family members are known to be regulators of programmed cell death. This protein positively regulates cell apoptosis by forming heterodimers with BCL-xL and BCL-2, and reversing their death repressor activity. Proapoptotic activity of this protein is regulated through its phosphorylation. Protein kinases AKT and MAP kinase, as well as protein phosphatase calcineurin were found to be involved in the regulation of this protein. Alternative splicing of this gene results in two transcript variants which encode the same isoform.

Product Info

Amount :	50 µl / 100 µl
Content :	Supplied at 1.0mg/mL in phosphate buffered saline (without Mg ²⁺ and Ca ²⁺), pH 7.4, 150mM NaCl, 0.02% sodium azide and 50% glycerol.
Storage condition :	Store the antibody at 4°C, stable for 6 months. For long-term storage, store at -20°C. Avoid repeated freeze and thaw cycles.

Application Note

Predicted MW: 23kd, Western blotting: 1:500~1:1000, Immunohistochemistry: 1:50~1:100

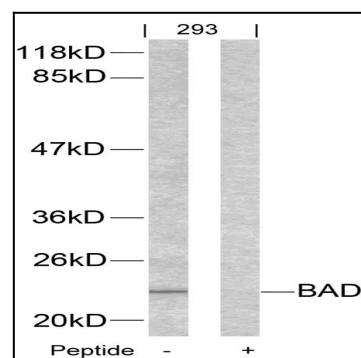


Figure 1: Western blot analysis of extracts from 293 cells using BAD(Ab-155) Antibody 35-1418 and the same antibody preincubated with blocking peptide.

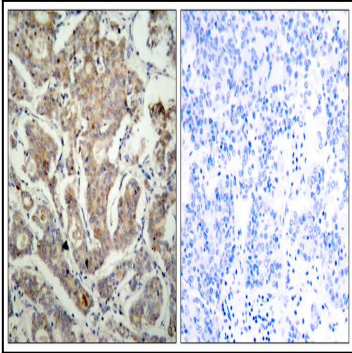


Figure 2: Immunohistochemical analysis of paraffin-embedded human breast carcinoma tissue using BAD(Ab-155) Antibody 35-1418 (left) or the same antibody preincubated with blocking peptide(right).