

35-1462: Polyclonal Antibody to Rb (Ab-780)

Clonality :	Polyclonal
Application :	WB,IHC
Reactivity :	Human,Mouse,Rat
Gene :	RB1
Gene ID :	5925
Uniprot ID :	P06400
Format :	Purified
Alternative Name :	pRb
Isotype :	Rabbit IgG

Immunogen Information : Peptide sequence around aa. 778~782 (T-L-S-P-I) derived from Human Rb.

Description

Key regulator of entry into cell division that acts as a tumor suppressor. Acts as a transcription repressor of E2F1 target genes. The underphosphorylated, active form of RB1 interacts with E2F1 and represses its transcription activity, leading to cell cycle arrest. Directly involved in heterochromatin formation by maintaining overall chromatin structure and, in particular, that of constitutive heterochromatin by stabilizing histone methylation. Recruits and targets histone methyltransferases SUV39H1, SUV420H1 and SUV420H2, leading to epigenetic transcriptional repression. Controls histone H4 'Lys-20' trimethylation. Inhibits the intrinsic kinase activity of TAF1. In case of viral infections, interactions with SV40 large T antigen, HPV E7 protein or adenovirus E1A protein induce the disassembly of RB1-E2F1 complex thereby disrupting RB1's activity.

Product Info

Amount :	50 µl / 100 µl
Content :	Supplied at 1.0mg/mL in phosphate buffered saline (without Mg ²⁺ and Ca ²⁺), pH 7.4, 150mM NaCl, 0.02% sodium azide and 50% glycerol.
Storage condition :	Store the antibody at 4°C, stable for 6 months. For long-term storage, store at -20°C. Avoid repeated freeze and thaw cycles.

Application Note

Predicted MW: 110kd, Western blotting: 1:500~1:1000, Immunohistochemistry: 1:50~1:100

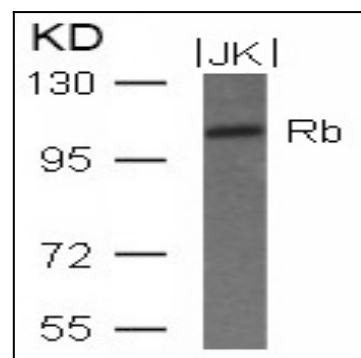


Figure 1: Western blot analysis of extracts from JK cells using Rb (Ab-780) Antibody 35-1462 .

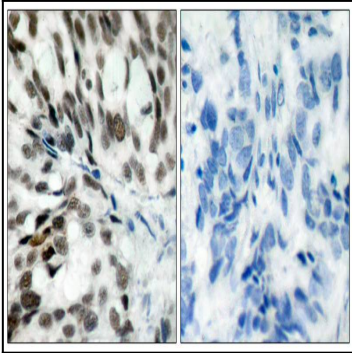


Figure 2: Immunohistochemical analysis of paraffin-embedded human breast carcinoma tissue using Rb (Ab-780) Antibody 35-1462 (left) or the same antibody preincubated with blocking peptide(right).