

### 35-1539: Polyclonal Antibody to Rac1 (Ab-71)

<b>Clonality :</b>	Polyclonal
<b>Application :</b>	WB,IF
<b>Reactivity :</b>	Human,Mouse,Rat
<b>Gene :</b>	RAC1
<b>Gene ID :</b>	5879
<b>Uniprot ID :</b>	P63000
<b>Format :</b>	Purified
<b>Alternative Name :</b>	Ras-like protein TC25, Ras-related C3 botulinum toxin substrate 1, p21-Rac1
<b>Isotype :</b>	Rabbit IgG
<b>Immunogen Information :</b>	Peptide sequence around aa.69~73 (P-L-S-Y-P) derived from Human Rac1.

### Description

Rac1 encoded by this gene is a GTPase which belongs to the RAS superfamily of small GTP-binding proteins. Members of this superfamily appear to regulate a diverse array of cellular events, including the control of cell growth, cytoskeletal reorganization, and the activation of protein kinases. Two transcript variants encoding different isoforms have been found for this gene.

### Product Info

<b>Amount :</b>	50 µl / 100 µl
<b>Content :</b>	Supplied at 1.0mg/mL in phosphate buffered saline (without Mg <sup>2+</sup> and Ca <sup>2+</sup> ), pH 7.4, 150mM NaCl, 0.02% sodium azide and 50% glycerol.
<b>Storage condition :</b>	Store the antibody at 4°C, stable for 6 months. For long-term storage, store at -20°C. Avoid repeated freeze and thaw cycles.

### Application Note

Predicted MW: 21kd, Western blotting: 1:500~1:1000, Immunofluorescence: 1:100~1:200

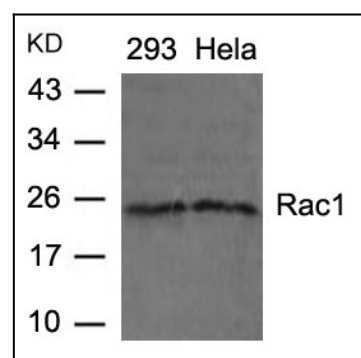


Figure 1: Western blot analysis of extracts from 293 and HeLa cells using Rac1(Ab-71) Antibody 35-1539 .

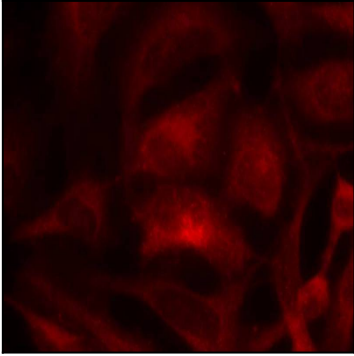


Figure 2: Immunofluorescence staining of methanol-fixed Hela cells using Rac1(Ab-71) Antibody 35-1539 .