

35-1577: Polyclonal Antibody to NFkB-p105/p50 (Ab-932)

Clonality :	Polyclonal
Application :	WB,IHC
Reactivity :	Human,Mouse,Rat
Gene :	NF-kB1
Gene ID :	4790
Uniprot ID :	P19838
Format :	Purified
Alternative Name :	DNA-binding factor KBF1, EBP-1, NF-kappa-B1 p84/NF-kappa-B1 p98, NFKB1, NFkB-p50
Isotype :	Rabbit IgG
Immunogen Information :	Peptide sequence around aa.930~934 (E-T-S-F-R) derived from Human NFkB-p105.

Description

NF-kappa-B is a pleiotropic transcription factor which is present in almost all cell types and is involved in many biological processes such as inflammation, immunity, differentiation, cell growth, tumorigenesis and apoptosis. NF-kappa-B is a homo- or heterodimeric complex formed by the Rel-like domain-containing proteins RELA/p65, RELB, NFKB1/p105, NFKB1/p50, REL and NFKB2/p52. The dimers bind at kappa-B sites in the DNA of their target genes and the individual dimers have distinct preferences for different kappa-B sites that they can bind with distinguishable affinity and specificity. Different dimer combinations act as transcriptional activators or repressors, respectively. Soren Beinke et al. (2004) Biochem J. 382(Pt 2): 393

Product Info

Amount :	50 µl / 100 µl
Content :	Supplied at 1.0mg/mL in phosphate buffered saline (without Mg2+ and Ca2+), pH 7.4, 150mM NaCl, 0.02% sodium azide and 50% glycerol.
Storage condition :	Store the antibody at 4°C, stable for 6 months. For long-term storage, store at -20°C. Avoid repeated freeze and thaw cycles.

Application Note

Predicted MW: 120 kd, Western blotting: 1:500~1:1000, Immunohistochemistry: 1:50~1:100

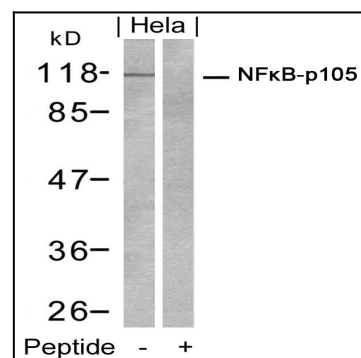


Figure 1: Western blot analysis of extracts from HeLa cells using NFkB-p105 (Ab-932) Antibody 35-1577 and the same antibody preincubated with blocking peptide.

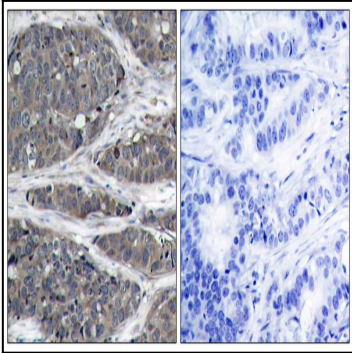


Figure 2: Immunohistochemical analysis of paraffin-embedded human breast carcinoma tissue using NFkB-p105(Ab-932) Antibody 35-1577 (left) or the same antibody preincubated with blocking peptide(right).