

### 35-1607: Polyclonal Antibody to Alpha-Synuclein (Ab-133)

<b>Clonality :</b>	Polyclonal
<b>Application :</b>	WB,IF
<b>Reactivity :</b>	Human,Mouse,Rat
<b>Gene :</b>	SNCA
<b>Gene ID :</b>	6622
<b>Uniprot ID :</b>	P37840
<b>Format :</b>	Purified
<b>Alternative Name :</b>	NACP, SYN, SYUA, alpha-synuclein
<b>Isotype :</b>	Rabbit IgG
<b>Immunogen Information :</b>	Peptide sequence around aa. 131~135 (E-G-Y-Q-D) derived from Human a-Synuclein.

#### Description

May be involved in the regulation of dopamine release and transport. Soluble protein, normally localized primarily at the presynaptic region of axons, which can form filamentous aggregates that are the major non amyloid component of intracellular inclusions in several neurodegenerative diseases (synucleinopathies). Induces fibrillization of microtubule-associated protein tau. Reduces neuronal responsiveness to various apoptotic stimuli, leading to a decreased caspase-3 activation.

#### Product Info

<b>Amount :</b>	50 µl / 100 µl
<b>Content :</b>	Supplied at 1.0mg/mL in phosphate buffered saline (without Mg <sup>2+</sup> and Ca <sup>2+</sup> ), pH 7.4, 150mM NaCl, 0.02% sodium azide and 50% glycerol.
<b>Storage condition :</b>	Store the antibody at 4°C, stable for 6 months. For long-term storage, store at -20°C. Avoid repeated freeze and thaw cycles.

#### Application Note

Predicted MW: 18kd, Western blotting: 1:500~1:1000, Immunofluorescence: 1:100~1:200

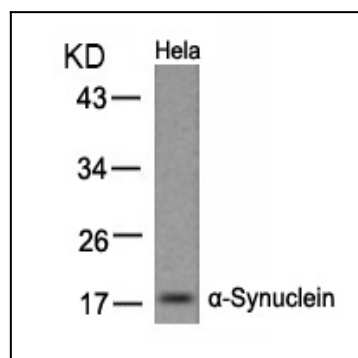


Figure 1: Western blot analysis of extracts from HeLa cells using α-Synuclein(Ab-133) Antibody 35-1607 .

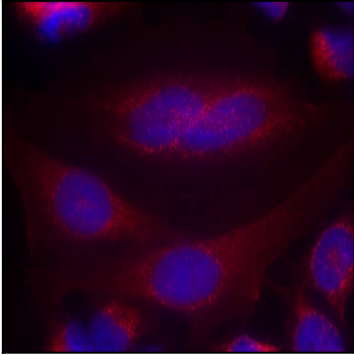


Figure 2: Immunofluorescence staining of methanol-fixed HeLa cells using a-Synuclein(Ab-133) Antibody 35-1607 .