

### 35-1641: Polyclonal Antibody to SHP-2 (Ab-580)

<b>Clonality :</b>	Polyclonal
<b>Application :</b>	IHC,WB,IF
<b>Reactivity :</b>	Rat,Mouse,Human
<b>Gene :</b>	PTPN11
<b>Gene ID :</b>	5781
<b>Uniprot ID :</b>	Q06124
<b>Format :</b>	Purified
<b>Alternative Name :</b>	Protein-tyrosine phosphatase 2C
<b>Isotype :</b>	Rabbit IgG
<b>Immunogen Information :</b>	Peptide sequence around aa.578~582 (R-V-Y-E-N) derived from Human SHP-2.

#### Description

Acts downstream of various receptor and cytoplasmic protein tyrosine kinases to participate in the signal transduction from the cell surface to the nucleus.

#### Product Info

<b>Amount :</b>	50 µl / 100 µl
<b>Content :</b>	Supplied at 1.0mg/mL in phosphate buffered saline (without Mg <sup>2+</sup> and Ca <sup>2+</sup> ), pH 7.4, 150mM NaCl, 0.02% sodium azide and 50% glycerol.
<b>Storage condition :</b>	Store the antibody at 4°C, stable for 6 months. For long-term storage, store at -20°C. Avoid repeated freeze and thaw cycles.

#### Application Note

Predicted MW: 72kd, Western blotting: 1:500~1:1000, Immunohistochemistry: 1:50~1:100, Immunofluorescence: 1:100~1:200

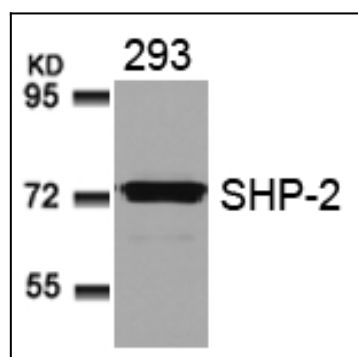


Figure 1: Western blot analysis of extracts from 293 cells using SHP-2(Ab-580) Antibody 35-1641 .



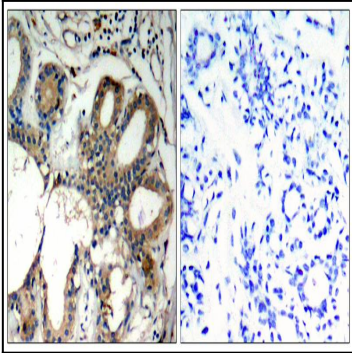


Figure 2: Immunohistochemical analysis of paraffin-embedded human breast carcinoma tissue using SHP-2(Ab-580) Antibody 35-1641 (left) or the same antibody preincubated with blocking peptide(right).

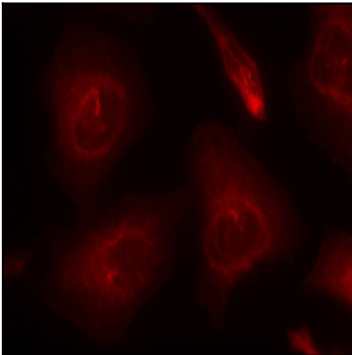


Figure 3: Immunofluorescence staining of methanol-fixed HeLa cells using SHP-2(Ab-580) Antibody 35-1641 .