

35-1707: Polyclonal Antibody to CDCP1(CD318)

| | |
|--------------------|----------------|
| Clonality : | Polyclonal |
| Application : | WB |
| Reactivity : | Human |
| Gene : | CDCP1 |
| Gene ID : | 64866 |
| Uniprot ID : | Q9H5V8 |
| Format : | Purified |
| Alternative Name : | TRASK, SIMA135 |
| Isotype : | Rabbit IgG |

Immunogen Information : Peptide sequence around aa.828~832(T-Q-E-P-M) derived from Human CDCP1(CD318).

Description

May be involved in cell adhesion and cell matrix association. May play a role in the regulation of anchorage versus migration or proliferation versus differentiation via its phosphorylation. May be a novel marker for leukemia diagnosis and for immature hematopoietic stem cell subsets. Belongs to the tetraspanin web involved in tumor progression and metastasis.

Product Info

| | |
|---------------------|--|
| Amount : | 50 µl / 100 µl |
| Content : | Supplied at 1.0mg/mL in phosphate buffered saline (without Mg ²⁺ and Ca ²⁺), pH 7.4, 150mM NaCl, 0.02% sodium azide and 50% glycerol. |
| Storage condition : | Store the antibody at 4°C, stable for 6 months. For long-term storage, store at -20°C. Avoid repeated freeze and thaw cycles. |

Application Note

Predicted MW: 140kd, Western blotting: 1:500

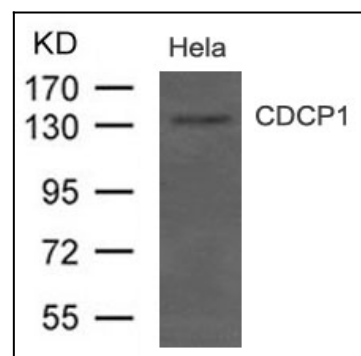


Figure 1: Western blot analysis of extract from HeLa cells using CDCP1(CD318) Antibody 35-1707