

35-1715: Polyclonal Antibody to CD11c

Clonality :	Polyclonal
Application :	WB
Reactivity :	Human
Gene :	ITGAX
Gene ID :	3687
Uniprot ID :	P20702
Format :	Purified
Alternative Name :	SLEB6, ITGAX
Isotype :	Rabbit IgG
Immunogen Information :	Peptide sequence around aa.1155~1159(Q-T-P-S-P)derived from Human CD11c.

Description

Integrin α -X/ β 2 is a receptor for fibrinogen. It recognizes the sequence G-P-R in fibrinogen. It mediates cell-cell interaction during inflammatory responses. It is especially important in monocyte adhesion and chemotaxis.

Product Info

Amount :	50 μ l / 100 μ l
Content :	Supplied at 1.0mg/mL in phosphate buffered saline (without Mg^{2+} and Ca^{2+}), pH 7.4, 150mM NaCl, 0.02% sodium azide and 50% glycerol.
Storage condition :	Store the antibody at 4°C, stable for 6 months. For long-term storage, store at -20°C. Avoid repeated freeze and thaw cycles.

Application Note

Predicted MW: 145kd, Western blotting: 1:500~1:1000

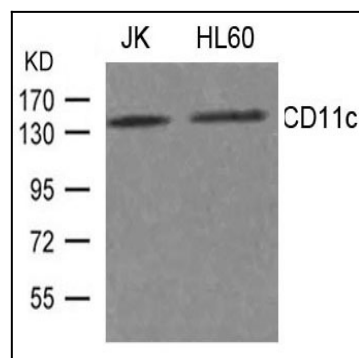


Figure 1: Western blot analysis of extract from JK, HL-60 cells using CD11c Antibody 35-1715