

### 35-1766: Polyclonal Antibody to Beclin-1

<b>Clonality :</b>	Polyclonal
<b>Application :</b>	WB
<b>Reactivity :</b>	Human
<b>Gene :</b>	BECN1
<b>Gene ID :</b>	8678
<b>Uniprot ID :</b>	Q14457
<b>Format :</b>	Purified
<b>Alternative Name :</b>	ATG6, VPS30
<b>Isotype :</b>	Rabbit IgG
<b>Immunogen Information :</b>	Peptide sequence around aa.69-73( F-I-E-T-P) derived from Human Beclin-1.

#### Description

Plays a central role in autophagy. Required for the abscission step in cytokinesis. May play a role in antiviral host defense. Protects against infection by a neurovirulent strain of Sindbis virus.

#### Product Info

<b>Amount :</b>	50 µl / 100 µl
<b>Content :</b>	Supplied at 1.0mg/mL in phosphate buffered saline (without Mg <sup>2+</sup> and Ca <sup>2+</sup> ), pH 7.4, 150mM NaCl, 0.02% sodium azide and 50% glycerol.
<b>Storage condition :</b>	Store the antibody at 4°C, stable for 6 months. For long-term storage, store at -20°C. Avoid repeated freeze and thaw cycles.

#### Application Note

Predicted MW: 60kd, Western blotting: 1:500~1:1000

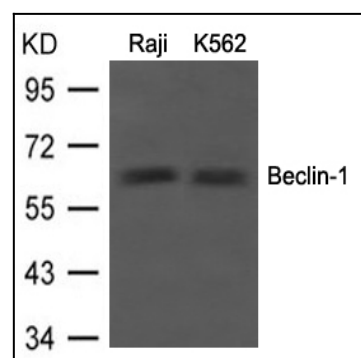


Figure 1: Western blot analysis of extracts from Raji and K562 cells using Beclin-1 Antibody 35-1766 .