

35-1824: Polyclonal Antibody to beta-Enolase(ENO-3)

| | |
|--------------------------------|--|
| Clonality : | Polyclonal |
| Application : | WB |
| Reactivity : | Human,Mouse |
| Gene : | ENO3 |
| Gene ID : | 2027 |
| Uniprot ID : | P13929 |
| Format : | Purified |
| Alternative Name : | MSE, GSD13 |
| Isotype : | Rabbit IgG |
| Immunogen Information : | Peptide sequence around aa.49~53(L-R-D-G-D) derived from Human b-Enolase(ENO-3). |

Description

Appears to have a function in striated muscle development and regeneration.

Product Info

| | |
|----------------------------|--|
| Amount : | 50 µl / 100 µl |
| Content : | Supplied at 1.0mg/mL in phosphate buffered saline (without Mg ²⁺ and Ca ²⁺), pH 7.4, 150mM NaCl, 0.02% sodium azide and 50% glycerol. |
| Storage condition : | Store the antibody at 4°C, stable for 6 months. For long-term storage, store at -20°C. Avoid repeated freeze and thaw cycles. |

Application Note

Predicted MW: 45kd, Western blotting: 1:500~1:1000

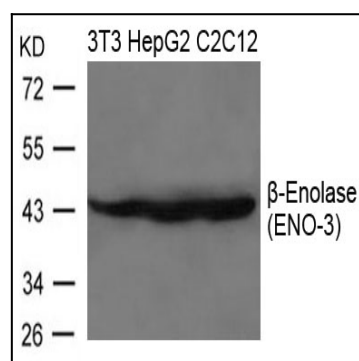


Figure 1: Western blot analysis of extracts from 3T3, HepG2 and C2C12 cells using b-Enolase(ENO-3) Antibody 35-1824 .