

#### 44-1008: Anti-CD2 Monoclonal Antibody (Clone:IHC531)(Discontinued)

<b>Clonality :</b>	Monoclonal
<b>Clone Name :</b>	IHC531
<b>Application :</b>	IHC
<b>Reactivity :</b>	Human
<b>Gene :</b>	CD2
<b>Gene ID :</b>	914
<b>Uniprot ID :</b>	P06729
<b>Format :</b>	Purified
<b>Alternative Name :</b>	CD2,SRBC
<b>Isotype :</b>	Mouse IgG1
<b>Immunogen Information :</b>	Human Cytolytic T Lymphocytes

#### Description

Cluster of differentiation 2 (CD2) is a useful early T-cell lineage restricted antigen that is present in T-cell differentiation. As a pan-T-cell marker, CD2 staining is used for recognizing practically all normal T-cells, but may be deleted in some T-cell neoplasms. Since CD2 is present in most precursor and mature T-cell leukemias and lymphomas, it is useful in the evaluation of lymphoid malignancies. By using CD2 and CD25 staining, the recognition of systemic mastocytosis and mastocytic leukemia is supported.

#### Product Info

<b>Amount :</b>	0.1 ml / 0.5 ml
<b>Purification :</b>	Protein A/G Chromatography
<b>Content :</b>	Tris Buffer, pH 7.3 - 7.7, with 1% BSA and <0.1% Sodium Azide
<b>Storage condition :</b>	Store at 2°C - 8°C. Do not freeze.

#### Application Note

Recommended dilutions: Immunohistochemical analysis: 1:100 - 1:200. However, this need to be optimized based on the research applications.

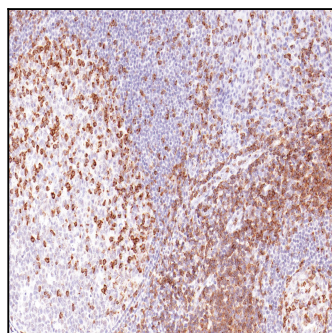


Figure 1: Immunohistochemical analysis of CD2 (Clone: IHC531) on Tonsil