

## 10-1038: Monoclonal Antibody to HtrA2 (Clone: ABM1H83)

<b>Clonality :</b>	Monoclonal
<b>Clone Name :</b>	ABM1H83
<b>Application :</b>	WB
<b>Reactivity :</b>	Human
<b>Gene :</b>	HTRA2
<b>Gene ID :</b>	27029
<b>Uniprot ID :</b>	O43464
<b>Format :</b>	Purified
<b>Alternative Name :</b>	HtrA2
<b>Isotype :</b>	Mouse IgG1, Kappa
<b>Immunogen Information :</b>	A partial length recombinant HtrA2 protein (amino acids 223-432) was used as the immunogen for this antibody.

### Product Info

<b>Amount :</b>	25 µg / 100 µg
<b>Purification :</b>	Protein G Chromatography
<b>Content :</b>	25 µg in 50 µl/100 µg in 200 µl PBS containing 0.05% BSA and 0.05% sodium azide. Sodium azide is highly toxic.
<b>Storage condition :</b>	Store the antibody at 4°C, stable for 6 months. For long-term storage, store at -20°C. Avoid repeated freeze and thaw cycles.

### Application Note

WB: 4-6 µg/ml

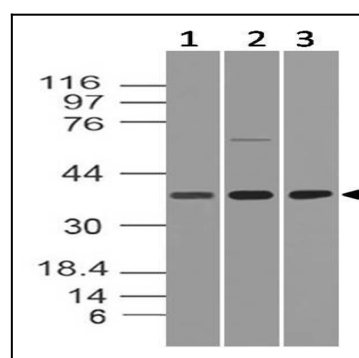


Fig-1: Western blot analysis of HtrA2. Anti-HtrA2 antibody (Clone: ABM1H83) was used at 4 µg/ml on hSpleen, HT-29 and hKidney lysates.