

34-1064: Polyclonal Antibody to Microtubule Associated Protein 2, MAP2A/B

Clonality :	Polyclonal
Application :	WB, IF/ICC, IHC
Reactivity :	Human, Rat, Mouse
Gene :	MAP2
Gene ID :	4133
Uniprot ID :	P11137
Format :	Conc. IgY prep.
Isotype :	Chicken, IgY
Immunogen Information :	Recombinant human projection domain sequence, amino acids 377-1505, our products Prot-r-MAP2-P1, Prot-r-MAP2-P2 and Prot-r-MAP2-P3.

Product Info

Amount :	25 µl / 50 µl
Content :	Antibody is supplied as an aliquot of IgY preparation.
Storage condition :	Store the antibody at 4°C; stable for 6 months. For long-term storage; store at -20°C. Avoid repeated freeze and thaw cycles.

Application Note

WB: 1:20,000-50,000. IF/ICC and IHC: 1:5,000-1:10,000.

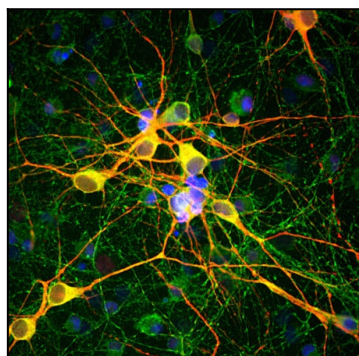


Figure-1: Immunofluorescent analysis of cortical neuron-glia cell culture from E20 rat stained with chicken pAb to microtubule associated protein 2 (MAP2),(34-1064), dilution 1:10,000 in red, and mouse mAb to MAP-tau,(34-1068), dilution 1:2,000, in green. The blue is DAPI staining of nuclear DNA. (34-1064) antibody stains dendrites and perikarya of neurons, while (34-1068) antibody labels neuronal perikarya, dendrites and also axonal process. As a result perikarya and dendrites appears orange-yellow, since they contain both MAP2 and tau, while axons are green.

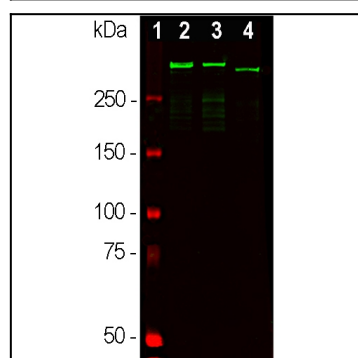


Figure-2: Western blot analysis of whole brain tissue lysates using chicken pAb to microtubule associated protein 2 (MAP2),(34-1064), dilution 1:50,000 in green: [1] protein standard (red), [2] adult rat brain, [3] embryonic E20 rat brain, [4] adult mouse brain. Strong band at ~280kDa mark corresponds to two major isoforms of MAP2 protein referred to as MAP2A and MAP2B. Smaller fragments of these isoforms are also detected if the antibody is used at higher concentrations.