

34-1129: Polyclonal Antibody to Vimentin

Clonality :	Polyclonal
Application :	Western blot, ICC/IF, IHC
Reactivity :	Human, Rat, Mouse, Cow, Pig, Horse
Gene :	VIM
Gene ID :	7431
Uniprot ID :	P08670
Format :	Sera
Isotype :	Rabbit, IgG
Immunogen Information :	Recombinant human vimentin expressed in and purified from E. coli

Product Info

Amount :	50 µl / 100 µl
Content :	Antibody is supplied as an aliquot of serum
Storage condition :	Store the antibody at 4°C; stable for 6 months. For long-term storage; store at -20°C. Avoid repeated freeze and thaw cycles.

Application Note

Western blot: 1:10,000. IF/ICC and IHC: 1:5,000.

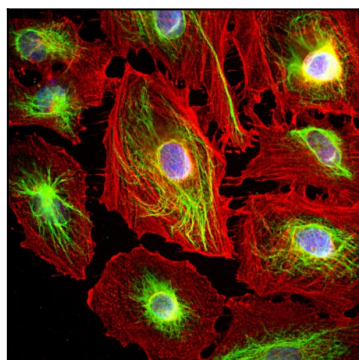


Figure-1: Immunofluorescence analysis of HeLa cells costained with rabbit pAb to vimentin,(34-1129), dilution 1:5,000, in green, and mouse mAb to Actin,(34-1002), dilution 1:500, in red. Blue is DAPI staining of nuclear DNA. The vimentin antibody stains the 10nm or intermediate filament network of the cytoskeleton. The antibody to actin labels the submembranous actin-rich cytoskeleton, stress fibers, and bundles of actin associated with cell adhesion sites.

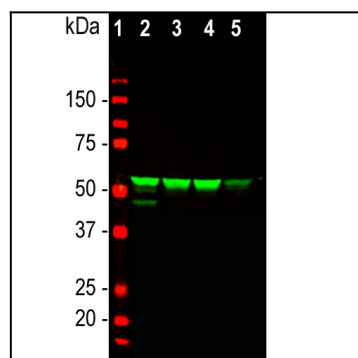


Figure-2: Western blot analysis of whole cell lysates using rabbit pAb to vimentin,(34-1129), dilution 1:5,000, in green. [1] protein standard (red), [2] HeLa, [3] SH-SY5Y, [4] HEK293, [5] NIH-3T3 cells. Strong band corresponds to vimentin protein with apparent SDS-PAGE molecular weight of ~55kDa.