

10-11553: Rabbit Polyclonal Antibody to Gastrin(Discontinued)

Clonality :	Polyclonal
Application :	IHC
Reactivity :	Human
Gene :	Gast
Gene ID :	14459
Uniprot ID :	P48757
Format :	Purified
Alternative Name :	Gastrin-34, G34, Gas
Isotype :	Rabbit IgG
Immunogen Information :	Recombinant gastrin conjugated to KLH.

Description

The antibody is specific against gastrin-containing cells. This anti-body reacts with human gastrin I and human gastrin I fragments. No cross-reactivity was observed with rat gastrin, human big gastrin, human gastrin releasing peptide, sulfated cholecystokinin amide, non-sulfated cholecystokinin amide and cholecystokinin.

Product Info

Amount :	0.5 ml
Content :	Purified immunoglobulin fraction of rabbit antiserum against GLUT-1 containing sodium azide as preservative.
Storage condition :	Store at 2-8°C.

Application Note

IHC : 1:50-1:100

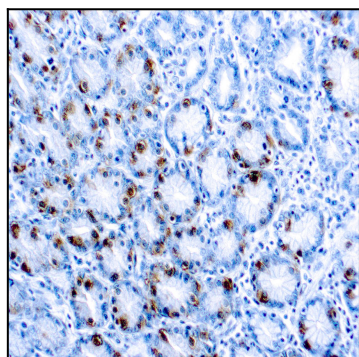


Figure 1 : Formalin fixed paraffin embedded stomach stained with gastrin antibody-300dpi (10-11553).