

10-4187-F: Monoclonal Antibody to CD24 (Clone: ML5) FITC Conjugated

| | |
|-------------------------|---|
| Clonality : | Monoclonal |
| Clone Name : | ML5 |
| Application : | FACS |
| Reactivity : | Human |
| Conjugate : | FITC |
| Gene : | CD24 |
| Gene ID : | 100133941 |
| Uniprot ID : | P25063 |
| Format : | Purified |
| Alternative Name : | Signal transducer CD24, Small cell lung carcinoma cluster 4 antigen |
| Isotype : | Mouse IgG2a Kappa |
| Immunogen Information : | Full length CD24 protein was used as the immunogen for this antibody. |

Product Info

| | |
|---------------------|--|
| Amount : | 100 µg |
| Purification : | Protein G Chromatography |
| Content : | 25 µg in 125 µl/100 µg in 500 µl Tris containing and 0.05% sodium azide. Sodium azide is highly toxic. |
| Storage condition : | Store the antibody at 4°C, stable for 6 months. |

Application Note

Flowcytometric analysis: 0.5-1/µg/10⁶ Cells

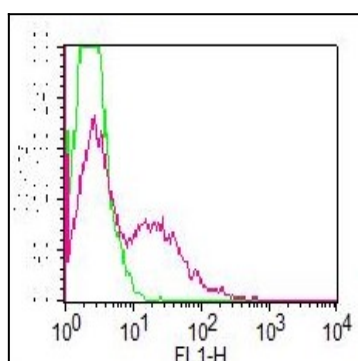


Figure-1: Cell surface flow cytometric analysis of CD24 in PBMC (Lymphocytes gated) using 0.5 µg/10⁶ Cells. Green represent FITC conjugated isotype control (Abeomics) and red represent FITC conjugated Anti-CD24 (10-4187F).