

## 10-7649: Monoclonal Antibody to Mouse PD-L2 (Clone: Ty25)

Clonality :	Monoclonal
Clone Name :	Ty25
Application :	FACS, WB
Reactivity :	Mouse
Gene :	Pdcd1lg2
Gene ID :	58205
Uniprot ID :	Q9WUL5
Format :	Purified
Alternative Name :	Programmed cell death 1 ligand 2, Programmed death ligand 2, Programmed death ligand 2, B7-DC, CD273, PDCD1 ligand 2
Isotype :	Rat IgG2a, Kappa
Immunogen Information :	Mouse PD-L2 transfected cell line was used as the immunogen for this antibody.

### Product Info

Amount :	25 µg / 100 µg
Purification :	Protein G Chromatography
Content :	25 µg in 50 µl/100 µg in 200 µl PBS containing 0.05% BSA and 0.05% sodium azide. Sodium azide is highly toxic.
Storage condition :	Store the antibody at 4°C; stable for 6 months. For long-term storage; store at -20°C. Avoid repeated freeze and thaw cycles.

### Application Note

Flowcytometric Analysis: 0.2-0.4 µg/10<sup>6</sup> Cells

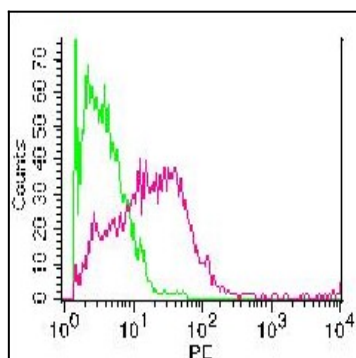


Figure 1: Cell surface staining of splenocytes stimulated with ConA + mIL2 for 3 days. Green represents Rat isotope control, red represents Anti-mouse PD-L2 (10-7649). 0.2 µg antibodies were used. Goat anti-rat PE was used as secondary antibody.