

### 36-3043: Anti-Prolactin (Pituitary Tumor Marker) Monoclonal Antibody(Clone: PRL/2910)

Clonality :	Monoclonal
Clone Name :	PRL/2910
Application :	IHC
Reactivity :	Human
Gene :	PRL
Gene ID :	5617
Uniprot ID :	P01236
Alternative Name :	Decidual prolactin; GHA1; Growth hormone A1; Lactogenic hormone; Luteotropic hormone; Mamotropin; PRL; Prolactin; Prolactin precursor
Isotype :	Mouse IgG2b, kappa
Immunogen Information :	Recombinant fragment of human Prolactin (PRL) protein (around aa 63-201) (exact sequence is proprietary)

#### Description

Prolactin is a growth factor that is secreted by the anterior pituitary. It is necessary for the proliferation and differentiation of the mammary glands. Prolactin is useful in the classification of pituitary tumors and study of pituitary disease. It also plays a role in the development of mammary cancer, functioning dually as a mitogen and a differentiating agent.

#### Product Info

Amount :	20 µg / 100 µg
Content :	200 µg/ml of Ab Purified from Bioreactor Concentrate by Protein A/G. Prepared in 10mM PBS with 0.05% BSA & 0.05% azide. Also available WITHOUT BSA & azide at 1.0mg/ml.
Storage condition :	Antibody with azide - store at 2 to 8°C. Antibody without azide - store at -20 to -80°C. Antibody is stable for 24 months. Non-hazardous.

#### Application Note

Immunohistochemistry (Formalin-fixed) (1-2ug/ml for 30 min at RT), (Staining of formalin-fixed tissues requires heating tissue sections in 10mM Tris with 1mM EDTA, pH 9.0, for 45 min at 95°C followed by cooling at RT for 20 minutes);

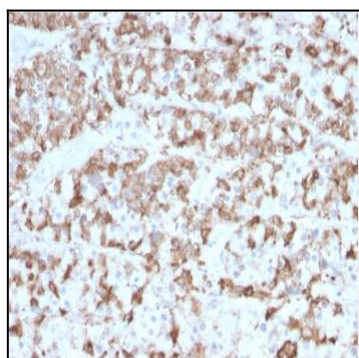


Fig. 1: Formalin-fixed, paraffin-embedded human Pituitary stained with Prolactin Mouse Monoclonal Antibody (PRL/2910).

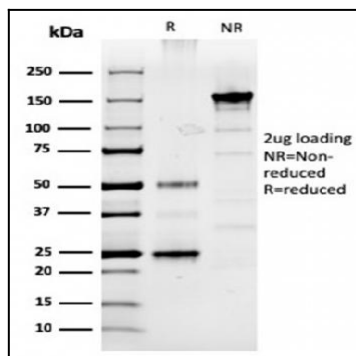


Fig. 2: SDS-PAGE Analysis Purified Prolactin Mouse Monoclonal Antibody (PRL/2910). Confirmation of Purity and Integrity of Antibody.