

### 36-3250: Anti-TGF-alpha (Transforming Growth Factor alpha) Monoclonal Antibody (Clone: SPM357)

<b>Clonality :</b>	Monoclonal
<b>Clone Name :</b>	SPM357
<b>Application :</b>	FACS, IF
<b>Reactivity :</b>	Human, Rat, Mouse
<b>Gene :</b>	TGFA
<b>Gene ID :</b>	7039
<b>Uniprot ID :</b>	P01135
<b>Alternative Name :</b>	EGF-like TGF; ETGF; TFGA; TGF Type 1; TGFA; Wa1; Waved 1
<b>Isotype :</b>	Mouse IgG1, kappa
<b>Immunogen Information :</b>	A 17-amino acid synthetic peptide from the carboxyl-terminus of rat TGF $\alpha$ .

#### Description

This antibody reacts with the C-terminus of TGF alpha and shows no cross-reaction with EGF and the neuropeptide synenkephalin. The staining with Ab-1 is completely blocked by the peptide used for raising this antibody. TGF (aa50) is a growth factor with 33% homology to EGF, binds to EGFR, activates tyrosine phosphorylation of the receptor, and stimulates cell proliferation. It plays a role in tumor initiation by inducing the reversible transformed phenotype.

#### Product Info

<b>Amount :</b>	20 $\mu$ g / 100 $\mu$ g
<b>Content :</b>	200 $\mu$ g/ml of Ab Purified from Bioreactor Concentrate by Protein A/G. Prepared in 10mM PBS with 0.05% BSA & 0.05% azide. Also available WITHOUT BSA & azide at 1.0mg/ml.
<b>Storage condition :</b>	Antibody with azide - store at 2 to 8°C. Antibody without azide - store at -20 to -80°C. Antibody is stable for 24 months. Non-hazardous.

#### Application Note

Flow Cytometry (1-2ug/million cells); Immunofluorescence (1-2ug/ml);

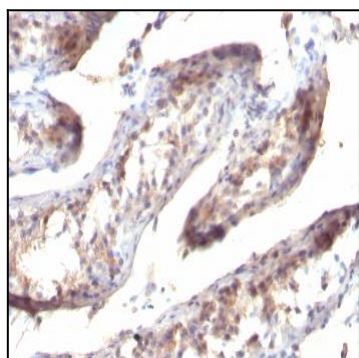


Fig. 1: Formalin-fixed, paraffin-embedded human Testicular Carcinoma stained with TGF alpha Mouse Monoclonal Antibody (SPM357)