

36-3263: Anti-TIMP2 (Tissue Inhibitor of Metalloproteinase 2) Monoclonal Antibody(Clone: TIMP2/2488R)

Clonality :	Monoclonal
Clone Name :	TIMP2/2488R
Application :	IHC
Reactivity :	Human, Mouse, Rat
Gene :	TIMP2
Gene ID :	7077
Uniprot ID :	P16035
Alternative Name :	Metalloproteinase inhibitor 2; TIMP metalloproteinase inhibitor 2; TIMP-2; TIMP2; Tissue Inhibitor of Metalloproteinase 2
Isotype :	Rabbit IgG
Immunogen Information :	A synthetic peptide from the N-terminus of human TIMP2 protein (aa56-66) (DSGNDIYGNIPI)

Description

It recognizes a protein of 21kDa, identified as tissue inhibitor of metalloproteinases-2 (TIMP-2). It is closely related to TIMP-1 and shows the highest binding affinity to both the latent (pro) and active forms of 72kDa Type IV collagenase (also known as MMP-2 or gelatinase A). It also has affinity for the active form of 92kDa Type IV collagenase (also known as MMP-9 or gelatinase B). TIMP-2 inhibits the proteolytic invasiveness of tumor cells and normal placental trophoblast cells.

Product Info

Amount :	20 µg / 100 µg
Content :	200 µg/ml of Ab Purified from Bioreactor Concentrate by Protein A/G. Prepared in 10mM PBS with 0.05% BSA & 0.05% azide. Also available WITHOUT BSA & azide at 1.0mg/ml.
Storage condition :	Antibody with azide - store at 2 to 8°C. Antibody without azide - store at -20 to -80°C. Antibody is stable for 24 months. Non-hazardous.

Application Note

Immunohistochemistry (Formalin-fixed) (1-2µg/ml for 30 minutes at RT)(Staining of formalin-fixed tissues requires heating tissue sections in 10mM Tris with 1mM EDTA, pH 9.0, for 45 min at 95°C followed by cooling at RT for 20 minutes);

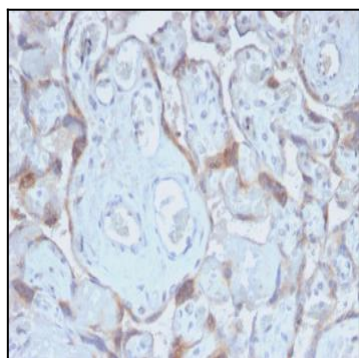


Fig. 1: Formalin-fixed, paraffin-embedded human Placenta stained with TIMP2 Rabbit Recombinant Monoclonal Antibody (TIMP2/2488R).

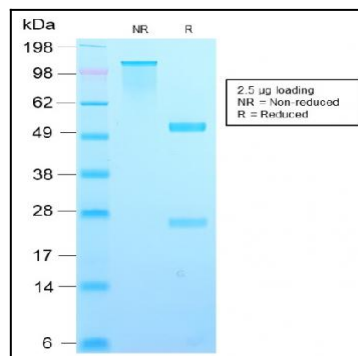


Fig. 2: SDS-PAGE Analysis Purified TIMP2 Rabbit Recombinant Monoclonal Antibody (TIMP2/2488R). Confirmation of Integrity and Purity of Antibody.