

### 36-3475: Anti-CD3e (T-Cell Marker) Monoclonal Antibody(Clone: rC3e/2479)

|                                |  |
|--------------------------------|--|
| <b>Clonality :</b>             | Monoclonal   |
| <b>Clone Name :</b>            | rC3e/2479  |
| <b>Application :</b>           | ELISA  |
| <b>Reactivity :</b>            | Human  |
| <b>Gene :</b>                  | CD3E   |
| <b>Gene ID :</b>               | 916  |
| <b>Uniprot ID :</b>            | P07766   |
| <b>Alternative Name :</b>      | CD3 epsilon; CD3 TCR complex; T cell antigen receptor complex epsilon subunit of T3; T-cell surface antigen T3/Leu-4 epsilon chain; T-cell surface glycoprotein CD3 epsilon chain; T3E; TCRE; TiT3 complex |
| <b>Isotype :</b>               | Mouse IgG1, kappa  |
| <b>Immunogen Information :</b> | Recombinant human CD3e fragment (around aa 23-119) (exact sequence is proprietary)   |

#### Description

Recognizes the epsilon-chain of CD3, which consists of five different polypeptide chains (designated as gamma, delta, epsilon, zeta, and eta) with MW ranging from 16-28kDa. The CD3 complex is closely associated at the lymphocyte cell surface with the T cell antigen receptor (TCR). Reportedly, CD3 complex is involved in signal transduction to the T cell interior following antigen recognition. The CD3 antigen is first detectable in early thymocytes and probably represents one of the earliest signs of commitment to the T cell lineage. In cortical thymocytes, CD3 is predominantly intra-cytoplasmic. However, in medullary thymocytes, it appears on the T cell surface. CD3 antigen is a highly specific marker for T cells, and is present in majority of T cell neoplasms.

#### Product Info

|                            |   |
|----------------------------|---|
| <b>Amount :</b>            | 20 µg / 100 µg  |
| <b>Content :</b>           | 200 µg/ml of Ab Purified from Bioreactor Concentrate by Protein A/G. Prepared in 10mM PBS with 0.05% BSA & 0.05% azide. Also available WITHOUT BSA & azide at 1.0mg/ml. |
| <b>Storage condition :</b> | Antibody with azide - store at 2 to 8°C. Antibody without azide - store at -20 to -80°C. Antibody is stable for 24 months. Non-hazardous.                               |

#### Application Note

ELISA (Use Ab at 2-4ug/ml for coating) (Order Ab without BSA);

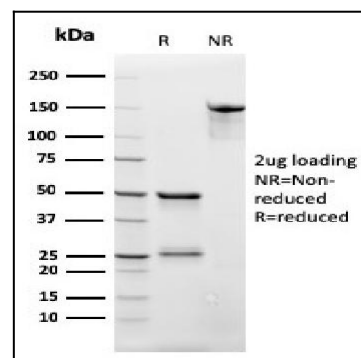


Fig. 1: SDS-PAGE Analysis Purified CD3e Recombinant Mouse Monoclonal Antibody (rC3e/2479). Confirmation of Integrity and Purity of Antibody.