

### 36-3486: Anti-CD4 (T-Helper/Inducer Cell Marker) Monoclonal Antibody(Clone: C4/206)

<b>Clonality :</b>	Monoclonal
<b>Clone Name :</b>	C4/206
<b>Application :</b>	FACS,ELISA
<b>Reactivity :</b>	Human
<b>Gene :</b>	CD4
<b>Gene ID :</b>	920
<b>Uniprot ID :</b>	P01730
<b>Alternative Name :</b>	L3T4; Leu3; Ly-4; Lymphocyte antigen CD4; p55; T cell antigen T4/LEU3; T cell differentiation antigen L3T4; T-cell surface antigen T4/Leu-3; T-cell surface glycoprotein CD4
<b>Isotype :</b>	Mouse IgG1, kappa
<b>Immunogen Information :</b>	Recombinant full-length human CD4 protein

#### Description

Recognizes a protein of 55kDa, identified as CD4. CD4 is a membrane glycoprotein of T lymphocytes that interacts with major histocompatibility complex class II antigens and is also a receptor for the human immunodeficiency virus. This protein is expressed not only in T lymphocytes, but also in B cells, macrophages, and granulocytes. It is also expressed in specific regions of the brain. The protein functions to initiate or augment the early phase of T-cell activation, and may function as an important mediator of indirect neuronal damage in infectious and immune-mediated diseases of the central nervous system. Multiple alternatively spliced transcript variants encoding different isoforms have been identified.

#### Product Info

<b>Amount :</b>	20 µg / 100 µg
<b>Content :</b>	200 µg/ml of Ab Purified from Bioreactor Concentrate by Protein A/G. Prepared in 10mM PBS with 0.05% BSA & 0.05% azide. Also available WITHOUT BSA & azide at 1.0mg/ml.
<b>Storage condition :</b>	Antibody with azide - store at 2 to 8°C. Antibody without azide - store at -20 to -80°C. Antibody is stable for 24 months. Non-hazardous.

#### Application Note

Flow Cytometry (0.5-2ug/million cells); ELISA (For coating, order Ab without BSA);

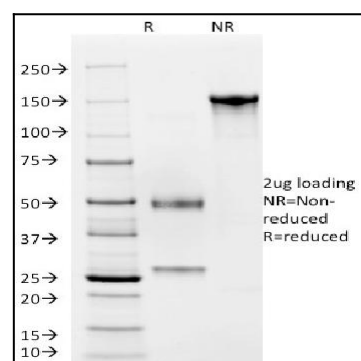


Fig. 1: SDS-PAGE Analysis Purified CD4 Mouse Monoclonal Antibody (C4/206). Confirmation of Integrity and Purity of Antibody.