

36-3492: Anti-CD5 (Mantle Cell Lymphoma Marker) Monoclonal Antibody(Clone: CRIS-1)

Clonality :	Monoclonal
Clone Name :	CRIS-1
Application :	FACS,IF,Functional Assay,IP
Reactivity :	Human
Gene :	CD5
Gene ID :	921
Uniprot ID :	P06127
Alternative Name :	CD5 antigen (p56 62), LEU1, Ly12, LyA, Lymphocyte antigen T1/Leu-1, Lymphocyte glycoprotein T1/Leu1, T-cell surface glycoprotein CD5
Isotype :	Mouse IgG2a, kappa
Immunogen Information :	Stimulated human leukocytes

Description

Recognizes a 67kDa transmembrane protein, which is identified as CD5 (HLDA I; WS Code T 29HLDA III; WS Code T 530). The CD5 antigen is found on 95% of thymocytes and 72% of peripheral blood lymphocytes. In lymph nodes, the main reactivity is observed in T cell areas. Anti-CD5 is a pan T-cell marker that also reacts with a range of neoplastic B-cells, e.g. chronic lymphocytic leukemia/small lymphocytic lymphoma (CLL/SLL), mantle cell lymphoma, and a subset (~10%) of diffuse large B-cell lymphoma. CD5 aberrant expression is useful in making a diagnosis of mature T-cell neoplasms.

Product Info

Amount :	20 µg / 100 µg
Content :	200 µg/ml of Ab Purified from Bioreactor Concentrate by Protein A/G. Prepared in 10mM PBS with 0.05% BSA & 0.05% azide. Also available WITHOUT BSA & azide at 1.0mg/ml.
Storage condition :	Antibody with azide - store at 2 to 8°C. Antibody without azide - store at -20 to -80°C. Antibody is stable for 24 months. Non-hazardous.

Application Note

Flow Cytometry (1-2ug/million cells); Immunofluorescence (1-2ug/ml); Functional Studies (Order Ab without BSA & Azide); Immunoprecipitation (0.5-1ug/500ug protein lysate);

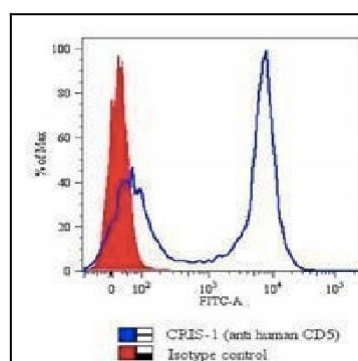


Fig. 1: FCM staining of human PBMCs using CD5 Monoclonal Antibody (CRIS-1).

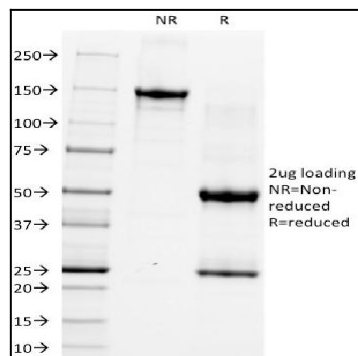


Fig. 2: SDS-PAGE Analysis Purified CD5 Monoclonal Antibody (CRIS-1). Confirmation of Integrity and Purity of Antibody.