

36-3717: Anti-Cytochrome P450 3A1 / CYP3A1 Monoclonal Antibody(Clone: P6)

Clonality :	Monoclonal
Clone Name :	P6
Application :	ELISA,FACS,WB
Reactivity :	Human, Mouse, Rat
Alternative Name :	CYP3A1; Cytochrome P450 family 3 subfamily A polypeptide 1
Isotype :	Mouse IgG1, kappa
Immunogen Information :	Full length protein (Rat). Rat liver cytochrome P450 3A1.

Description

Cytochrome P450 oxidase (commonly abbreviated CYP) is a generic term for a large number of related, but distinct, oxidative enzymes important in vertebrate physiology. The cytochrome P450 mixed-function monooxygenase system is probably the most important element of Phase I metabolism in mammals. P450s are membrane-bound, either in the inner membrane of mitochondria or in the endoplasmic reticulum of cells where they metabolise thousands of endogenous and exogenous compounds. In the liver, these substrates include toxins, drugs, and other unneeded and potentially harmful molecules. Humans have 18 families of cytochrome P450 genes and 43 subfamilies; the CYP1 family is involved in drug metabolism and includes 3 subfamilies, 3 genes and 1 pseudogene. The CYP2 family are part of the microsomal drug metabolising system that is responsible for oxidation of many therapeutic agents as well as steroids, fatty acids and many other endogenous substances. Cytochrome P450 3A4 is abundantly expressed in liver and small intestine and is inducible by barbiturates, glucocorticoids and rifampicin. P6 is highly specific for members of the CYP 3A gene family and cross reacts with CY 3A4 in human, CYP 3A in rat and potentially CYP 3A11 (based on inducibility) in mice.

Product Info

Amount :	20 µg / 100 µg
Content :	200 µg/ml of Ab Purified from Bioreactor Concentrate by Protein A/G. Prepared in 10mM PBS with 0.05% BSA & 0.05% azide. Also available WITHOUT BSA & azide at 1.0mg/ml.
Storage condition :	Antibody with azide - store at 2 to 8°C. Antibody without azide - store at -20 to -80°C. Antibody is stable for 24 months. Non-hazardous.

Application Note

ELISA (For coating, order antibody without BSA); Flow Cytometry (1-2ug/million cells); ,Western Blot (1-2ug/ml),

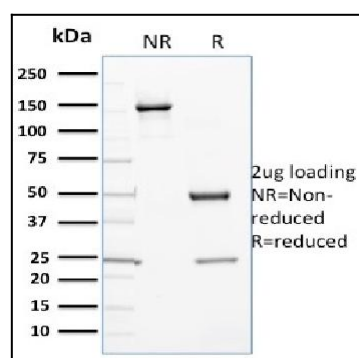


Fig. 1: SDS-PAGE Analysis Purified Cytochrome P450 1A1/1A2 Mouse Monoclonal Antibody (P6). Confirmation of Purity and Integrity of Antibody.