

36-3797: Anti-Negative Control for Rabbit Monoclonal Antibodies Monoclonal Antibody(Clone: NCRBM/1520R)

Clonality :	Monoclonal
Clone Name :	NCRBM/1520R
Application :	ELISA,FACS,IF,IP,WB,IHC
Reactivity :	All species
Isotype :	Rabbit IgG, kappa
Immunogen Information :	Recombinant full-length human KRT7 protein

Description

To serve as a true negative control for various procedures, this rabbit monoclonal IgG should be used under the identical conditions and at the same dilution as the rabbit monoclonal antibody being used for a positive reaction.

Product Info

Amount :	20 µg / 100 µg
Content :	200 µg/ml of Ab Purified by Protein A Column. Prepared in 10mM PBS with 0.05% BSA & 0.05% azide. Also available WITHOUT BSA & azide at 1.0mg/ml.
Storage condition :	Antibody with azide - store at 2 to 8°C. Antibody without azide - store at -20 to -80°C. Antibody is stable for 24 months. Non-hazardous.

Application Note

ELISA; Flow Cytometry; Immunofluorescence; Immunoprecipitation; Western Blot (1-2ug/ml);Immunohistochemistry (Frozen);Immunohistochemistry (Formalin-fixed) (1-2ug/ml for 30 minutes at RT)(Staining of formalin-fixed tissues requires heating tissue sections in 10mM Tris with 1mM EDTA, pH 9.0, for 45 min at 95 °C followed by cooling at RT for 20 minutes)

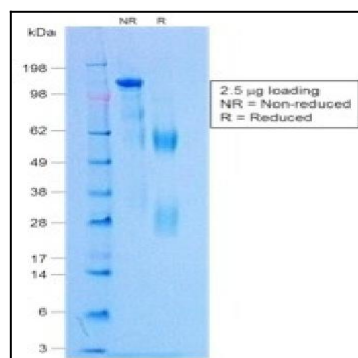


Fig. 1: SDS-PAGE Analysis Purified Negative Control for Rabbit Monoclonal Antibodies (NCRBM/1520R). Confirmation of Purity and Integrity of Antibody.