

## 11-10034: Polyclonal Antibody to DLL1

<b>Clonality :</b>	Polyclonal
<b>Application :</b>	WB
<b>Reactivity :</b>	Human
<b>Gene :</b>	DLL1
<b>Gene ID :</b>	28514
<b>Uniprot ID :</b>	O00548
<b>Format :</b>	Purified
<b>Alternative Name :</b>	DLL1,UNQ146/PRO172
<b>Isotype :</b>	Rabbit IgG
<b>Immunogen Information :</b>	A partial length recombinant DLL1 protein (amino acids 506-714) was used as the immunogen for this antibody.

### Description

DLL1 (Delta-like 1) is a human homolog of the Drosophila Notch ligand Delta that is the ligand for Notch3. It belongs to the family of Notch ligands and Notch signaling is one of the most conserved pathways in the regulation of cell differentiation and cell fate decisions. DLL1 is expressed in a goblet cell-specific manner in human colonic tissue. DLL1 like notch ligands are known to selectively drive antigen-specific CD4 T helper 1 cell responses which are important in protective immune response in leishmaniasis.

### Product Info

<b>Amount :</b>	25 µg / 100 µg
<b>Purification :</b>	Protein A Chromatography
<b>Content :</b>	25 µg in 50 µl/100 µg in 200 µl PBS containing 0.05% BSA and 0.05% sodium azide. Sodium azide is highly toxic.
<b>Storage condition :</b>	Store the antibody at 4°C; stable for 6 months. For long-term storage; store at -20°C. Avoid repeated freeze and thaw cycles.

### Application Note

Western blot analysis: 1-2 µg/ml

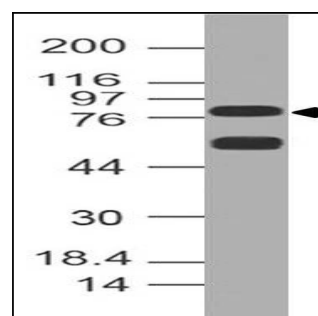


Figure-1: Expression analysis of DLL1. Anti-DLL1 antibody (11-10034) was used at 1 µg/ml on h Heart lysate.