

### 36-1168: Monoclonal Antibody to Ku (p70/p80) (Nuclear Marker)(Clone : KU729)-PE

Clonality :	Monoclonal
Clone Name :	KU729
Application :	FACS,IF
Reactivity :	Human
Conjugate :	PE
Gene :	XRCC6
Gene ID :	2547
Uniprot ID :	P12956
Format :	Purified
Alternative Name :	XRCC6,G22P1
Isotype :	Mouse IgG1, kappa
Immunogen Information :	Nuclear extract of human HL-60 cells

#### Description

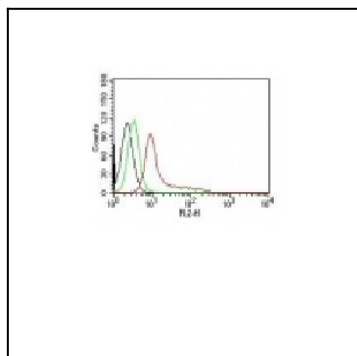
Recognizes a dimer of two proteins of 70kDa and ~80kDa, identified as two subunits of Ku. MAb KU729 recognizes a conformational epitope of p70/p80 dimer, which is destroyed during Western blotting. The p70/p80 dimer is important for function of a 460kDa DNA-dependent protein kinase. Ku protein plays a role in cell signaling, proliferation, DNA repair, replication, transcriptional activation, and apoptosis.

#### Product Info

Amount :	0.5 ml
Purification :	Affinity Chromatography
Content :	PE conjugated Ku (p70/p80) Prepared in 10mM PBS with 0.05% BSA and 0.05% azide.
Storage condition :	Store the antibody at 4°C; stable for 6 months.

#### Application Note

Flow Cytometry (5ul per test per one million cells or 5ul per 100ul of whole blood);Immunofluorescence (1:50-1:100 for 30 minutes at RT);



Flow Cytometry of human Ku (p70/p80) on K562 Cells. Black: Cells alone; Green: Isotype Control; Red: PE-labeled Ku Monoclonal Antibody (KU729).