

## 36-1245: Monoclonal Antibody to HSP60 (Heat Shock Protein 60) (Mitochondrial Marker)(Clone : GROEL/730)

<b>Clonality :</b>	Monoclonal
<b>Clone Name :</b>	GROEL/730
<b>Application :</b>	FACS,IF,IHC
<b>Reactivity :</b>	Human
<b>Gene :</b>	HSPD1
<b>Gene ID :</b>	3329
<b>Uniprot ID :</b>	P10809
<b>Format :</b>	Purified
<b>Alternative Name :</b>	HSPD1,HSP60
<b>Isotype :</b>	Mouse IgG1, kappa
<b>Immunogen Information :</b>	Recombinant human HSP60 protein

### Description

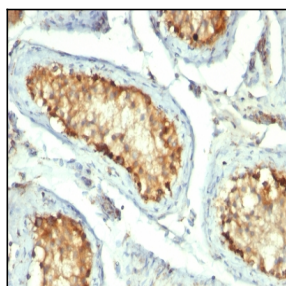
Recognizes a 60kDa protein, identified as the heat shock protein 60 (hsp60). A wide variety of environmental and pathophysiological stressful conditions trigger the synthesis of a family of proteins known as heat shock proteins (hsp's), more appropriately called as stress response proteins (srp's). Hsp60 is a potential antigen in a number of autoimmune diseases. In human arthritis and in experimentally induced arthritis in animals, disease development coincides with the development of immune reactivity directed against not only bacterial hsp60, but also against its mammalian homolog. Clone GROEL730 reacts only with human and is useful in distinguishing human hsp60 from other mammalian and bacterial hsp60.

### Product Info

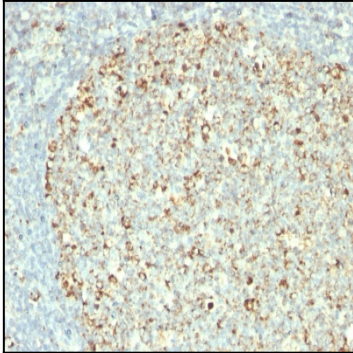
<b>Amount :</b>	100 µg
<b>Purification :</b>	Affinity Chromatography
<b>Content :</b>	100 µg in 500 µl PBS containing 0.05% BSA and 0.05% sodium azide. Sodium azide is highly toxic.
<b>Storage condition :</b>	Store the antibody at 4°C; stable for 6 months. For long-term storage; store at -20°C. Avoid repeated freeze and thaw cycles.

### Application Note

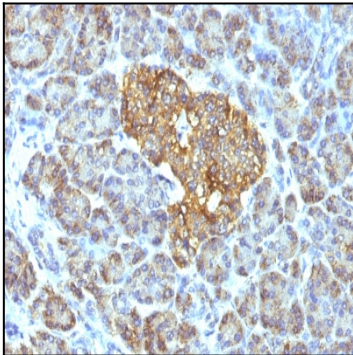
Flow Cytometry (1-2ug/million cells); Immunofluorescence (1-2ug/ml); Immunohistochemistry (Formalin-fixed) (1-2ug/ml for 30 minutes at RT)(Staining of formalin-fixed tissues is enhanced by heating tissue sections in 1mM EDTA Buffer, pH 8.5-9.5, for 45 min at 95&degC followed by cooling at RT for 20 minutes)



Formalin-fixed, paraffin-embedded human Testicular Carcinoma stained with HSP60 Monoclonal Antibody (GROEL/730)



Formalin-fixed, paraffin-embedded human Tonsil stained with HSP60 Monoclonal Antibody (GROEL/730)



Formalin-fixed, paraffin-embedded human Pancreas stained with HSP60 Monoclonal Antibody (GROEL/730).