

36-1273: Monoclonal Antibody to IgG (Immunoglobulin Gamma Heavy Chain) (B-Cell Marker)(IG217 + IG266)

Clonality :	Monoclonal
Clone Name :	IG217 + IG266
Application :	FACS,IF,IHC
Reactivity :	Human
Gene :	IGHG1
Uniprot ID :	P01857
Format :	Purified
Alternative Name :	IGHG1
Isotype :	Mouse IgG1, kappa + Mouse IgG2a, kappa
Immunogen Information :	Purified human IgG

Description

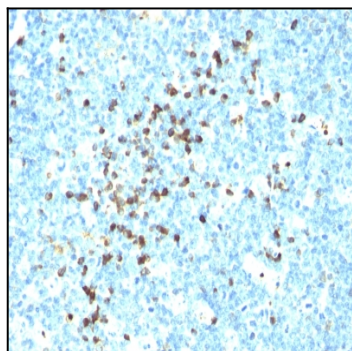
This MAb is specific to heavy chain of IgG and shows minimal cross-reaction with heavy chains of other immunoglobulins. It is reactive with all subclasses of gamma heavy chain (IgG1, IgG2a, IgG2b, IgG3). The most common feature of plasmacytomas, and certain non-Hodgkin's lymphomas is the restricted expression of a single heavy chain class. Demonstration of clonality in lymphoid infiltrates indicates that the infiltrate is clonal and therefore malignant. Ab-3 is superb for staining of formalin-fixed tissues.

Product Info

Amount :	100 µg
Purification :	Affinity Chromatography
Content :	100 µg in 500 µl PBS containing 0.05% BSA and 0.05% sodium azide. Sodium azide is highly toxic.
Storage condition :	Store the antibody at 4°C; stable for 6 months. For long-term storage; store at -20°C. Avoid repeated freeze and thaw cycles.

Application Note

Flow Cytometry (1ug/million cells); Immunofluorescence (1-2ug/ml); Immunohistochemistry (Formalin-fixed) (1-2ug/ml for 30 minutes at RT)(Staining of formalin-fixed tissues requires heating tissue sections in 10mM Tris with 1mM EDTA, pH 9.0, for 45 min at 95°C followed by cooling at RT for 20 minutes);



Formalin-fixed, paraffin-embedded human Tonsil stained with IgG Monoclonal Antibody (IG217 + IG266)