

## 36-1276: Monoclonal Antibody to IgM (Immunoglobulin Mu Heavy Chain) (B-Cell Marker)(Clone : ICO-30)

<b>Clonality :</b>	Monoclonal
<b>Clone Name :</b>	ICO-30
<b>Application :</b>	FACS,IF,IHC
<b>Reactivity :</b>	Human
<b>Gene :</b>	IGHM
<b>Uniprot ID :</b>	P01871
<b>Format :</b>	Purified
<b>Alternative Name :</b>	IGHM
<b>Isotype :</b>	Mouse IgG1, kappa
<b>Immunogen Information :</b>	Heavy chain of human IgM

### Description

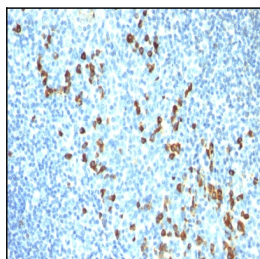
Recognizes a protein of 75kDa, identified as mu heavy chain of human immunoglobulins. It does not cross-react with alpha (IgA), gamma (IgG), epsilon (IgE), or delta (IgD), heavy chains, T-cells, monocytes, granulocytes, or erythrocytes. Monomeric IgM is expressed as a membrane bound antibody on the surface of B cells and as a pentamer when secreted by plasma cells. IgM antibody is prominent in early immune responses to most antigens. Aberrant levels are associated with immune deficiency states, hereditary deficiencies, myeloma, Waldenstrom's macroglobulinemia, chronic infection and hepatocellular disease. This MAb is useful in the identification of leukemias, plasmacytomas, and certain non-Hodgkin's lymphomas. The most common feature of these malignancies is the restricted expression of a single heavy chain class. Demonstration of clonality in lymphoid infiltrates indicates that the infiltrate is clonal and therefore malignant.

### Product Info

<b>Amount :</b>	100 µg
<b>Purification :</b>	Affinity Chromatography
<b>Content :</b>	100 µg in 500 µl PBS containing 0.05% BSA and 0.05% sodium azide. Sodium azide is highly toxic.
<b>Storage condition :</b>	Store the antibody at 4°C; stable for 6 months. For long-term storage; store at -20°C. Avoid repeated freeze and thaw cycles.

### Application Note

Flow Cytometry (1-2ug/million cells); Immunofluorescence (1-2ug/ml); Immunohistochemistry (Formalin-fixed) (1-2ug/ml for 30 minutes at RT)(Staining of formalin-fixed tissues requires heating tissue sections in 10mM Tris with 1mM EDTA, pH 9.0, for 45 min at 95&degC followed by cooling at RT for 20 minutes);



Formalin-fixed, paraffin-embedded human Tonsil stained with IgM Monoclonal Antibody (ICO-30)