

36-1308: Monoclonal Antibody to IL-6 (Interleukin-6) / Interferon beta-2 (Hybridoma Growth Factor)(Clone : IL6/1270)(Discontinued)

Clonality :	Monoclonal
Clone Name :	IL6/1270
Application :	FACS,IF,IHC
Reactivity :	Human,Mouse
Gene :	IL6
Gene ID :	3569
Uniprot ID :	P05231
Format :	Purified
Alternative Name :	IL6,IFNB2
Isotype :	Rat IgG1
Immunogen Information :	Recombinant IL-6 protein

Description

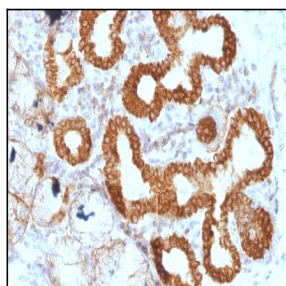
IL-6 is a potent lymphoid cell growth factor that stimulates the growth and survivability of certain B-cells and T-cells. It plays a critical role in B-cell differentiation to plasma cells and is a potent growth factor for plasmacytoma and myeloma. IL-6 is produced by a variety of cell types, including monocytes, fibroblasts and endothelial cells. Upon stimulation, macrophages, T, B, mast, and glial cells, eosinophils, keratinocytes and granulocytes also secrete IL-6. It is involved in host defense, acute phase reactions, immune responses, and hematopoiesis.

Product Info

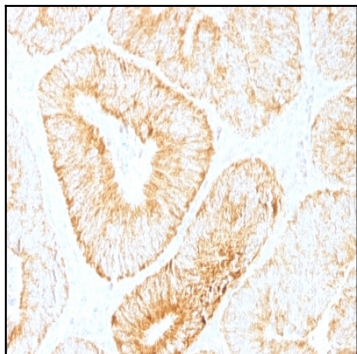
Amount :	100 µg
Purification :	Affinity Chromatography
Content :	100 µg in 500 µl PBS containing 0.05% BSA and 0.05% sodium azide. Sodium azide is highly toxic.
Storage condition :	Store the antibody at 4°C; stable for 6 months. For long-term storage; store at -20°C. Avoid repeated freeze and thaw cycles.

Application Note

Flow Cytometry (0.5-1 µg/million cells in 0.1ml); Immunofluorescence (0.5-1 µg/ml); Immunohistology (Formalin-fixed) (1-2 µg/ml for 30 minutes at RT);(Staining of formalin-fixed tissues requires boiling tissue sections in 10mM Tris with 1mM EDTA, pH 9.0, for 10-20 min followed by cooling at RT for 20 minutes);Optimal dilution for a specific application should be determined.



Formalin-fixed, paraffin-embedded human Esophageal Carcinoma stained with IL-6 Monoclonal Antibody (IL6/1270).



Formalin-fixed, paraffin-embedded human Colon Carcinoma stained with IL-6 Monoclonal Antibody (IL6/1270).