

36-1313: Monoclonal Antibody to Insulin / IRDN (beta-Cell & Insulinoma Marker)(Clone : IRDN/794)

Clonality :	Monoclonal
Clone Name :	IRDN/794
Application :	IHC
Reactivity :	Human, Mouse, Rat
Gene :	INS
Gene ID :	3630
Uniprot ID :	P01308
Format :	Purified
Alternative Name :	INS
Isotype :	Mouse IgG1, kappa
Immunogen Information :	Recombinant INS protein

Description

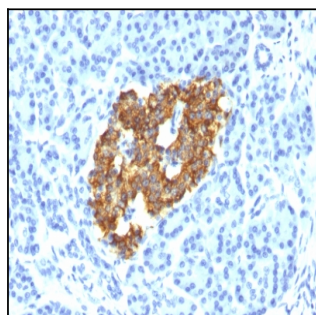
Recognizes a polypeptide which is identified as insulin, a 51-amino acid polypeptide composed of A and B chains connected through the C-peptide. Proinsulin, which has very little biological activity, is cleaved by proteases within its cell of origin into the insulin molecule and the C-terminal basic residue. Insulin enhances membrane transport of glucose, amino acids, and certain ions. It also promotes glycogen storage, formation of triglycerides, and synthesis of proteins and nucleic acids. Deficiency of insulin results in diabetes mellitus. The main storage site for insulin is the pancreatic islets. Antibodies to insulin are important as beta-cell and insulinoma marker.

Product Info

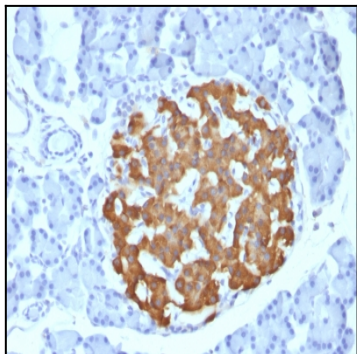
Amount :	100 µg
Purification :	Affinity Chromatography
Content :	100 µg in 500 µl PBS containing 0.05% BSA and 0.05% sodium azide. Sodium azide is highly toxic.
Storage condition :	Store the antibody at 4°C; stable for 6 months. For long-term storage; store at -20°C. Avoid repeated freeze and thaw cycles.

Application Note

Immunohistochemistry (Formalin-fixed) (1-2ug/ml for 30 minutes at RT)(Staining of formalin-fixed tissues requires heating tissue sections in 10mM Tris with 1mM EDTA, pH 9.0, for 45 min at 95°C followed by cooling at RT for 20 minutes);



Formalin-fixed, paraffin-embedded human Pancreas stained with Insulin Monoclonal Antibody (IRDN/794).



Formalin-fixed, paraffin-embedded Rat Pancreas stained with Insulin Monoclonal Antibody (IRDN/794).