

36-1332: Monoclonal Antibody to Involucrin (Squamous Cell Terminal Differentiation Marker)(Clone : IVRN/827)

Clonality :	Monoclonal
Clone Name :	IVRN/827
Application :	FACS,IF
Reactivity :	Human
Gene :	IVL
Gene ID :	3713
Uniprot ID :	P07476
Format :	Purified
Alternative Name :	IVL
Isotype :	Mouse IgG1, kappa
Immunogen Information :	Purified involucrin from human keRatinocytes

Description

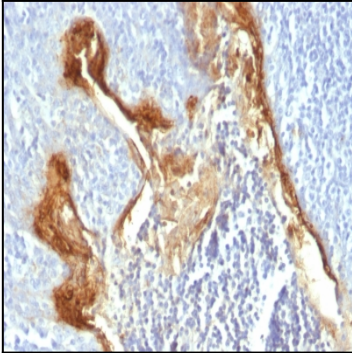
It recognizes a protein of 66kDa-170kDa, identified as involucrin. In Western blotting of cultured human keratinocytes, this MAb reacts with a 120kDa protein. Involucrin is expressed in a range of stratified squamous epithelia, including the cornea, which lacks a distinct cornified layer. In normal epidermis, it is first expressed in the upper spinous layers, and in keratinocyte cultures, all cells that have left the basal layer express it. Involucrin expression is altered in pathological conditions: in psoriasis and other benign epidermal hyperplasias, involucrin expression begins closer to the basal layer than normal; expression is abnormal in squamous cell carcinomas and premalignant lesions, and is reduced in severe dysplasias of the larynx and cervix.

Product Info

Amount :	100 µg
Purification :	Affinity Chromatography
Content :	100 µg in 500 µl PBS containing 0.05% BSA and 0.05% sodium azide. Sodium azide is highly toxic.
Storage condition :	Store the antibody at 4°C; stable for 6 months. For long-term storage; store at -20°C. Avoid repeated freeze and thaw cycles.

Application Note

Flow Cytometry (0.5-1.0 µg/million cells in 0.1ml); Immunofluorescence (1-2 µg/ml); Immunohistology (Formalin-fixed) (0.1-0.2 µg/ml for 30 min at RT); (Staining of formalin-fixed tissues is enhanced by digestion with trypsin or Protease XXV at 1mg/ml PBS for 5 min at 37 °C); (Note that enzyme digestion is better than Citrate buffer based epitope unmasking); Optimal dilution for a specific application should be determined.



Formalin-fixed, paraffin-embedded human Tonsil stained with Involucrin Monoclonal Antibody (IVRN/827)