

## 10-3005: Monoclonal Antibody to TLR8/CD288 (Clone: ABM15F6)

|                                |  |
|--------------------------------|--|
| <b>Clonality :</b>             | Monoclonal   |
| <b>Clone Name :</b>            | ABM15F6  |
| <b>Application :</b>           | IHC,FACS   |
| <b>Reactivity :</b>            | Human  |
| <b>Gene :</b>                  | TLR8   |
| <b>Gene ID :</b>               | 51311  |
| <b>Uniprot ID :</b>            | Q9NR97   |
| <b>Format :</b>                | Purified   |
| <b>Alternative Name :</b>      | TLR8,UNQ249/PRO286   |
| <b>Isotype :</b>               | Mouse IgG1 Kappa   |
| <b>Immunogen Information :</b> | A partial length recombinant TLR8 protein (amino acids 750-900) was used as the immunogen for this antibody. |

### Description

Toll like receptor 8, also known as CD288, is a member of TLR family. It plays an important role in sensing phagocytosed pathogen. TLR8 recognizes ssRNA and recruits MyD88 and leads to the activation of transcription factor NF-kappa B. TLR8 has two splice variants, viz., TLR8v1 and TLR8v2 and one missense variant, termed G or A1G allele of TLR8. TLR8v1 has additional 19 amino acids in the N-terminus. It is predominantly expressed in lung and peripheral blood leukocytes.

### Product Info

|                            |   |
|----------------------------|---|
| <b>Amount :</b>            | 25 µg / 100 µg  |
| <b>Purification :</b>      | Protein G Chromatography  |
| <b>Content :</b>           | 25 µg in 50 µl/100 µg in 200 µl PBS containing 0.05% BSA and 0.05% sodium azide. Sodium azide is highly toxic.                |
| <b>Storage condition :</b> | Store the antibody at 4°C, stable for 6 months. For long-term storage, store at -20°C. Avoid repeated freeze and thaw cycles. |

### Application Note

Immunohistochemical analysis: 5 µg/ml;FACS analysis: 2 µg/10<sup>6</sup> cells

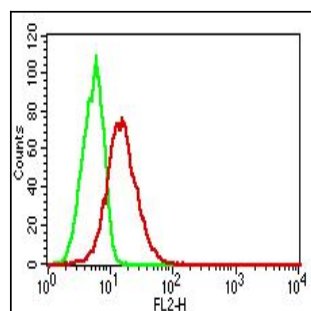


Fig-1: Intracellular flow analysis of hTLR8 in U937 using 2 µg/10<sup>6</sup> cells of hTLR8 antibody (Clone: ABM15F6). Green represents isotype control; red represents anti-hTLR8 antibody. Goat anti-mouse PE conjugate was used as secondary.

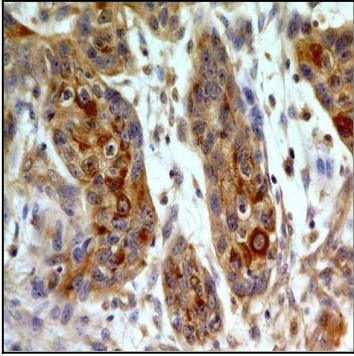


Fig-2: Immunohistochemical analysis of TLR8 in small cell carcinoma of esophagus using TLR8 antibody (Clone: ABM15F6) at 5 µg/ml.