

36-1366: Monoclonal Antibody to Cytokeratin 14 (KRT14) (Squamous Cell Marker)(Clone : LL002)

Clonality :	Monoclonal
Clone Name :	LL002
Application :	FACS,IF,IHC
Reactivity :	Human, Mouse, Rat
Gene :	KRT14
Gene ID :	3861
Uniprot ID :	P02533
Format :	Purified
Alternative Name :	KRT14
Isotype :	Mouse IgG3, kappa
Immunogen Information :	A synthetic peptide of 15 amino acid from the C-terminus of human keRatin 14.

Description

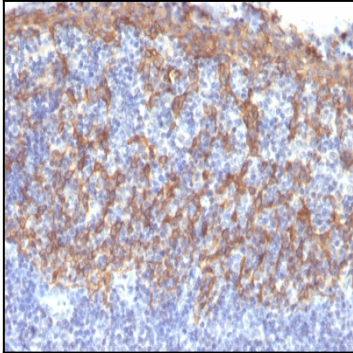
Cytokeratin 14 (CK14) belongs to the type I (or A or acidic) subfamily of low molecular weight keratins and exists in combination with keratin 5 (type II or B or basic). CK14 is found in basal cells of squamous epithelia, some glandular epithelia, myoepithelium, and mesothelial cells. Anti-CK14 is useful in differentiating squamous cell carcinomas from poorly differentiated epithelial tumors. Anti-CK14 is one of the specific basal markers for distinguishing between basal and non-basal subtypes of breast carcinomas. Anti-CK14 is also a good marker for differentiation of intraductal from invasive salivary duct carcinoma by the positive staining of basal cells surrounding the in-situ neoplasm as well as for differentiation of benign prostate from prostate carcinoma. Furthermore, this antibody has been useful in separating oncocytic tumors of the kidney from its renal mimics, and in identifying metaplastic carcinomas of the breast.

Product Info

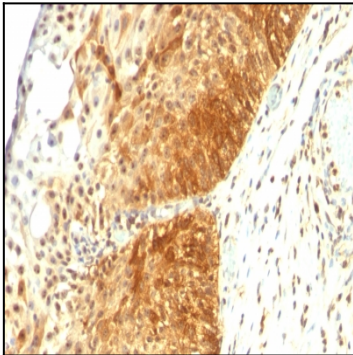
Amount :	100 µg
Purification :	Affinity Chromatography
Content :	100 µg in 500 µl PBS containing 0.05% BSA and 0.05% sodium azide. Sodium azide is highly toxic.
Storage condition :	Store the antibody at 4°C; stable for 6 months. For long-term storage; store at -20°C. Avoid repeated freeze and thaw cycles.

Application Note

Flow Cytometry (1-2ug/million cells); Immunofluorescence (1-2ug/ml); Immunohistochemistry (Formalin-fixed) (1-2ug/ml for 30 min at RT)(Staining of formalin-fixed tissues requires heating tissue sections in 10mM Tris with 1mM EDTA, pH 9.0, for 45 min at 95°C followed by cooling at RT for 20 minutes);



Formalin-fixed, paraffin-embedded human Prostate stained with Cytokeratin 14 Monoclonal Antibody (LL002).



Formalin-fixed, paraffin-embedded prostate stained with Cytokeratin 14 Monoclonal Antibody (LL002).