

## 10-4100: Monoclonal Antibody to Mouse CD196 (Clone: ABM40H1)

<b>Clonality :</b>	Monoclonal
<b>Clone Name :</b>	ABM40H1
<b>Application :</b>	WB
<b>Reactivity :</b>	Mouse
<b>Gene :</b>	Ccr6
<b>Gene ID :</b>	12458
<b>Uniprot ID :</b>	O54689
<b>Format :</b>	Purified
<b>Alternative Name :</b>	C-C chemokine receptor type 6, C-C CKR-6, KY411
<b>Isotype :</b>	Rat IgG2a, Kappa
<b>Immunogen Information :</b>	Full length recombinant protein from mCD196 was used as the immunogen for this antibody.

### Description

CD196 displays a high degree of genetic homology between mouse and human. Moreover, in both species it is chromosomally segregated from the main chemokine receptor gene cluster. mCD196 is expressed by myeloid DCs (dendritic cells), mature B cells, subpopulations of memory/effector CD4+ and CD8+ T cells, but not plasmacytoid DCs or native T cells. mCD196 mediates their migration and function via stimulation with its ligand CCL20 (also known as macrophage inflammatory protein (MIP)-3alpha. mCD196 expression has been correlated with stage and prognosis in a variety of cancers including hepatocellular carcinoma, colorectal carcinoma, glioma, and non-small cell lung cancer. It is also believed to play a role in regulation of cancer progression.

### Product Info

<b>Amount :</b>	25 µg / 100 µg
<b>Purification :</b>	Protein G Chromatography
<b>Content :</b>	25 µg in 50 µl/100 µg in 200 µl PBS containing 0.05% BSA and 0.05% sodium azide. Sodium azide is highly toxic.
<b>Storage condition :</b>	Store the antibody at 4°C, stable for 6 months. For long-term storage, store at -20°C. Avoid repeated freeze and thaw cycles.

### Application Note

WB: 2-4 µg/ml

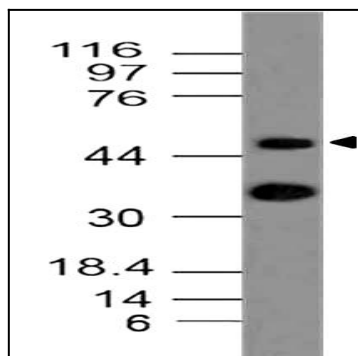


Fig-1: Western blot analysis of mCD196. Anti-mCD196 antibody (Clone: ABM40H1) was used at 2  $\mu$ g/ml on B16 lysate.