

## 10-4164: Monoclonal Antibody to Mouse S100A8 (Clone: ABM4A69)

<b>Clonality :</b>	Monoclonal
<b>Clone Name :</b>	ABM4A69
<b>Application :</b>	FACS, WB
<b>Reactivity :</b>	Mouse
<b>Gene :</b>	S100a8
<b>Gene ID :</b>	20201
<b>Uniprot ID :</b>	P27005
<b>Format :</b>	Purified
<b>Alternative Name :</b>	Chemotactic cytokine CP-10, Leukocyte L1 complex light chain, Migration inhibitory factor-related protein 8, Pro-inflammatory S100 cytokine
<b>Isotype :</b>	Rat IgG
<b>Immunogen Information :</b>	Full length recombinant protein of mS100A8 was used as the immunogen for this antibody.

### Description

S100A8 is a low molecular weight (10 kDa) secreted cytoplasmic protein belonging to S100 family of calcium- and zinc-binding protein. S100A8 regulates a number of cellular processes, such as, inflammation, antimicrobial, oxidant-scavenging and apoptosis-inducing activities, cell cycle progression and differentiation, leukocyte arachidonic acid trafficking and metabolism. S100A8 is a homodimer but predominantly remains as heterodimer with S100A9 and the S100A8/S100A9 complex is called as Calprotectin. S100A8 is generally expressed in myeloid cells, neutrophils, monocytes and keratinocytes but high levels are found in the serum sample of patients with inflammatory diseases, such as, rheumatoid, cystic fibrosis, inflammatory bowel disease, systemic lupus erythematosus, progressive systemic sclerosis and many other inflammatory diseases. S100A8 is also associated with Psoriasis (an inflammatory skin disorder characterized by keratinocyte hyperproliferation and altered differentiation).

### Product Info

<b>Amount :</b>	25 µg / 100 µg
<b>Purification :</b>	Protein G Chromatography
<b>Content :</b>	25 µg in 50 µl/100 µg in 200 µl PBS containing 0.05% BSA and 0.05% sodium azide. Sodium azide is highly toxic.
<b>Storage condition :</b>	Store the antibody at 4°C, stable for 6 months. For long-term storage, store at -20°C. Avoid repeated freeze and thaw cycles.

### Application Note

Western Blot analysis: 2-4 µg/ml, Flowcytometric analysis: 2-4 µg/10<sup>6</sup> cells

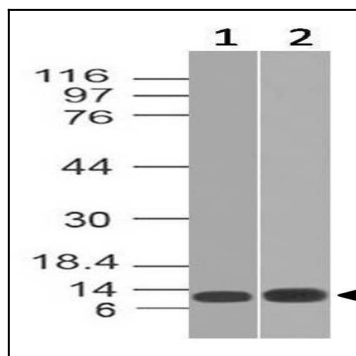


Figure-1: Western blot analysis of mS100A8. Anti-mS100A8 antibody (Clone: ABM4A69) was used at 2 µg/ml on mSKM and mOvary lysates.

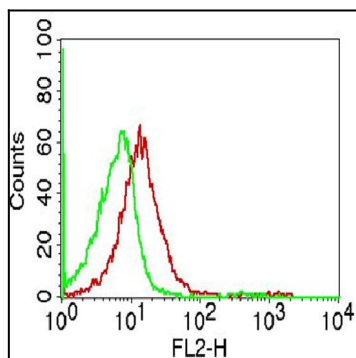


Figure-2: Intracellular flow cytometric analysis of mouse S100A8 on murine splenocytes using 2 µg/ 10<sup>6</sup> cells of antibody (Clone: ABM4A69). Goat anti-rat PE conjugate was used as secondary. Green represents isotype control; red represents anti-S100A8 antibody.